



4" Mini Box Speakers



1 Dual Cone Full Range Speakers

The 80W speakers provide high quality audio within a robust ABS unit.

2 Colour Options

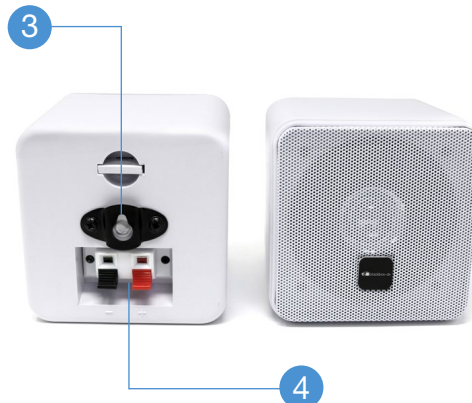
Speakers available in black or white.

3 Easy Installation

Simply use the supplied rawl plugs & screws to mount to a wall or flat surface (wall mount supplied already attached).

4 Quick Connect Terminals

Allow quick connection to an audio device.



Unit Weight	One: 813g, Pair: 1.626Kg
Unit Dimensions	One: 119W x 134D x 120H
Colour	Black or White
Frequency Response	80 - 20000Hz
Impedance	8Ω
Peak Music Power	80W
Power RMS	40W
Sensitivity	90dBV/Pa
Type	Dual Core
Included	1 x Pair of Mini Box Speakers (either black or white), 2 x Fixing Screws,