



 blackbox-av
audio ■ video ■ interactive



MKII Headphones
Manual

Safety Guide

Read this guide carefully before using or installing the product.

Preventing accidents and protecting the health of the user of the Headphones

- Ensure the audio levels are set so ear damage cannot occur when someone is using the product.
- When tethering the armoured cable ensure there is no trip hazard created when the headphones are stored on its hanger.
- Over time, monitor the product to ensure there is no damage caused by deliberate vandalism which could harm other users.

Preventing damage to the product and malfunctions

- As the product is not water-resistant install in a dry place where excessive liquid ingress may not occur.
- Clean the product regularly with a soft dry cloth or anti bacterial wipe.
- Ensure there is no pressure on the 3.5mm headphone jack when installed.
- Only use this product with good quality equipment with a dedicated headphone connection. Damage caused by defective audio equipment will void the warranty.

Warranty

Blackbox-av provides a 12 month warranty with this product. For further information or advice please contact **info@blackboxav.co.uk**

Your new MKII Headphones

In the Box:

1. MKII Headphones
2. Modern Hanger (supplied with standard version)
3. Knuckle Mounting Plate (optional)
4. AutoPlay Hanger (supplied with AutoPlay version)
5. Multi-Purpose Screws
6. Manual

MKII Headphones

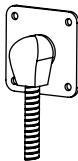
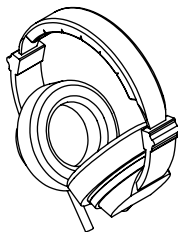
Our MKII Headphones are reliable, vandal resistant and suitable for any application within the public domain, thanks to the audio cable being protected inside a larger steel armoured conduit.

AutoPlay Functionality

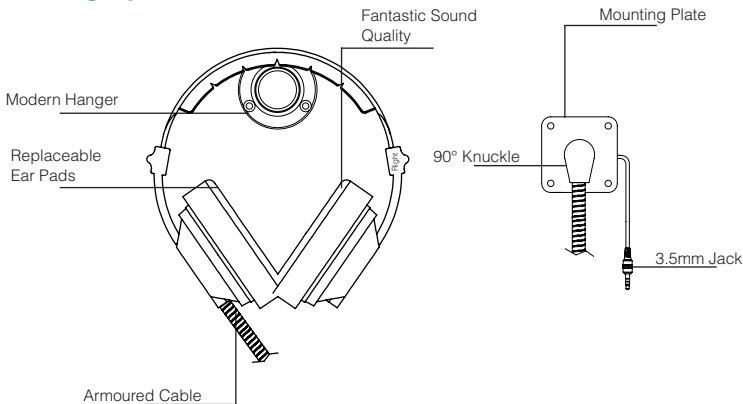
The AutoPlay version incorporates an Auto-Trigger function, this activates the audio playback device when the headphones are removed from their hanger.

Mounting Plate

The optional mounting plate allows you to further strengthen the cable fitting point.



Setting Up



Overview

Modern Hanger

The elegantly designed hanger is constructed from turned black acetal plastic. Beautifully simple in design it's also incredibly robust. The AutoPlay function is also enabled via the unique hanger.

Armoured Cable

The audio cable is protected by a 1.35m long stainless steel armoured conduit with a heavy duty strain relief, offering further protection.

Fantastic Sound Quality

The internal speaker elements provide great dynamic range, reproducing audio with high clarity at 100Ω.

90° Swivel Knuckle

The supplied swivel knuckle is used to fix the cable in place, offering a secure anchor point and preventing cable fracture.

3.5mm Jack

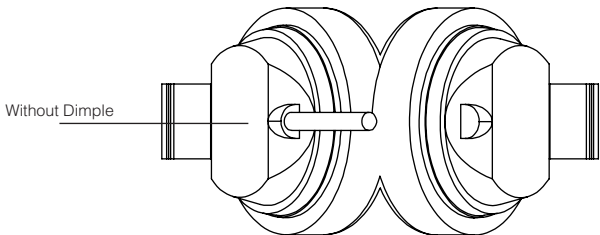
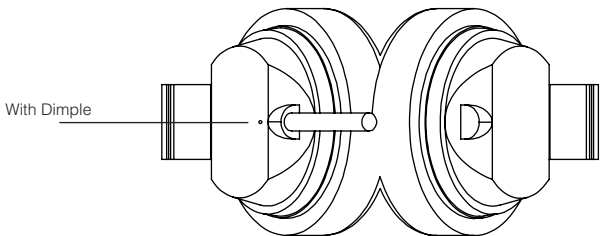
Simply connect to your audio playback device via the 3.5mm jack.

Replacement Parts

The design of the MKII Headphones is so robust they are likely to last for many years. Over this time there tends to be wear on the perishable parts so to keep the headphones looking great we offer replacement parts, available to purchase on our online store.

Identifying AutoPlay vs Standard

You will be able to identify whether your headphones have AutoPlay functionality through the existence of a **dimple** shown in the diagram below. It's located on the left side of the headphones next to the audio cable.

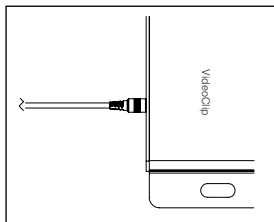


AutoPlay Version

AutoPlay Functionality

When used with a compatible device, the AutoPlay version allows the triggering of playback unit upon pickup. When the headphones are lifted, a sensor triggers your content. When returned to the hanger, the content will stop.

Connect the Headphones



Connecting to a SoundClip

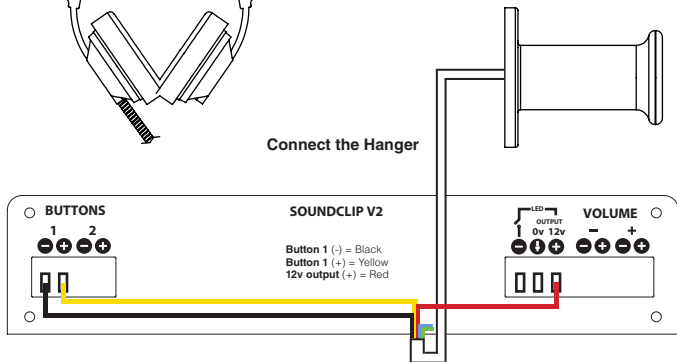
AutoPlay functionality is supported by our SoundClip range of audio players. The headphones are supplied with a unique Hanger, while the 3.5mm jack is installed to the output. The Modern Hanger is responsible for activating content and must be connected to the SoundClip.

For connection to a SoundClip you will be using the following wires with terminal blocks:

Yellow and Black - Content Activation
Red - Power (12V)

1. Simply plug the Content Activation (Yellow and Black) into button 1.
2. Plug the Power (Red) into the 12V Out.
3. Connect Headphones by plugging into the audio jack.
4. Change the mode file to ensure it's set to the AutoPlay function. More info can be found in the SoundClip Range manual.

Connect the Hanger



Connecting to your own Device

Although designed primarily to be utilised alongside our range of media players, the MKII Headphones can be connected to a device of your own (first we recommend you check compatibility with us) - to do so you must be aware of the following cable connections;

Black (Ground) - Connect to Controller

Depending on how unit triggers:

Yellow and Black - Content Activation (contact is normally closed)

Or

Green and Black - Content Activation (contact is normally open)

Depending on how much power is required:

Red (Power) - 12V power consumption rated @ 50 milliamps

Blue (Power) - 5V or 3.3v supply consumption rated @ 50 milliamps

Note: Do not use 12V down a 5V line

Connecting a VideoClip

If you purchased a VideoClip set-up for AutoPlay functionality, you will have received an I/O adapter with your headphones.

The I/O adapter connects from the blue wire straight into the I/O port on the VideoClip.

The Yellow and Black wire is connected into Button 8, content for AutoPlay must be programmed to folder 01.

Therefore Button inputs 01 and 08 are reserved when in AutoPlay mode, button inputs 02 - 07 can be programmed as normal (see VideoClip instructions for further details).

Installation

The Hanger

The Hanger needs to be mounted flush to a surface to allow the headphones to sit securely - the headphone icon displayed on the hanger should be installed the right way up.

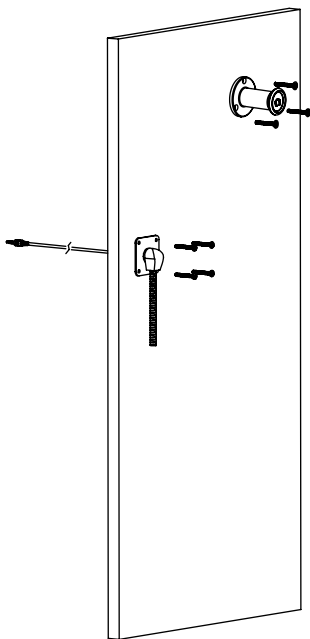
The Knuckle & Mounting Plate

The knuckle plate should be mounted to a structure with a suitable hole for the knuckle nut to fit through (see technical drawings). Alternatively, you can fit the knuckle without the plate into a metal panel.

Knuckle Hole

A cutout for the knuckle will need to be made to the correct measurements.

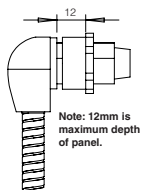
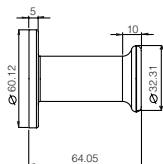
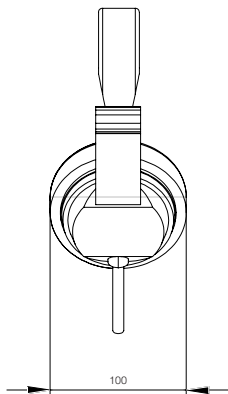
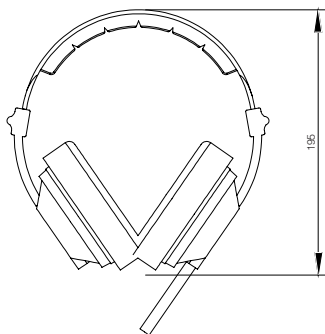
See technical drawings for the measurements.



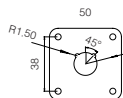
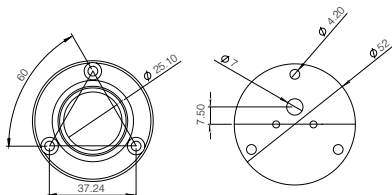
Technical Information

Unit Weight	562g
Packaged Weight	572g
Package Dimensions	285 x 145 x 195mm
Unit Dimensions	180 x 100 x 195mm
Nominal Impedance	100Ω x 2
Frequency Range	16 - 21.000 Hz
Sound Pressure Level	96dB (1mW / 1kHz)
Input Power (W)	Rated: 30mW - Max: 50mW
Input Power (V)	Rated: 1.7V - Max: 2.25V
Armoured Cable Length	1350mm
3.5mm Cable Length (from Knuckle)	650mm (+/- 10mm)
Screw Sizes	25mm
AutoPlay Cable Length	1050mm
Acoustic Principle	Closed
Driver Principle	Dynamic
External Noise Isolation	approx. 22 dBa
Operating Temperature	-25°C to 60°C

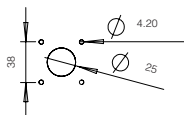
Technical Drawings



Swivel Knuckle



Knuckle Mounting Plate



Related Products



In-Line Headphone Volume Control

Allow easy volume control with our high quality In-Line Volume Control. Simply connect to any device with the 6.35mm or 3.5mm jack.



Volume Control with Amp

Easily control your headphones & speakers volume with our high quality Volume Control with an inbuilt 3W Amp. Connect to any device with the 3.5mm jack.



Earpad Guazes

Replacement Parts

The design of the MKII Headphones is so robust they are likely to last for many years. Over this time there tends to be wear on the perishable parts so to keep the headphones looking great we offer replacement parts, available to purchase on our online store.



Head Band



Ear Pads



Bellows

