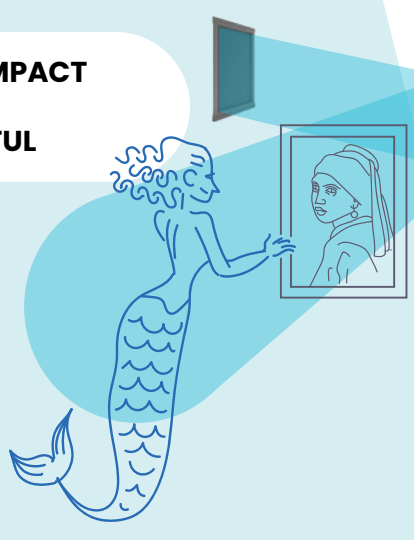


**ULTRASOUND
&
AUDIO QUALITY**

Delivered message is understandable and memorised for a longer time. Sound is clear even if the speaker is loud, nearly like headphones . Totally contactless.

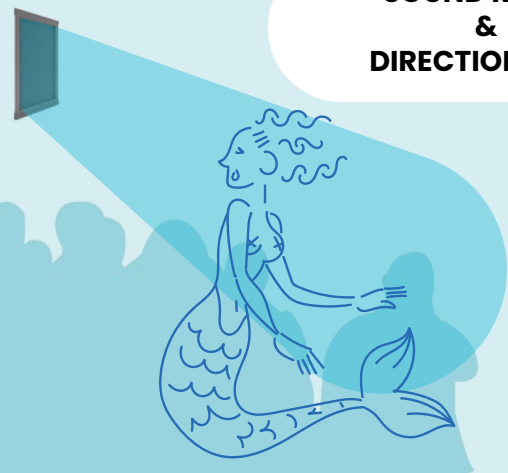
The speaker is discreet and ultra-compact, its directionality and power allowed to instal the system up to 10m from the customer.

**ULTRA-COMPACT
&
POWERFUL**



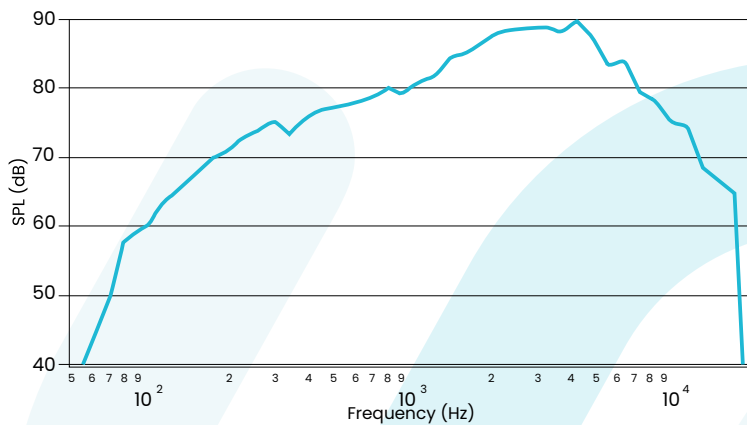
**SOUND RANGE
&
DIRECTIONALITY**

Sound is directed within a 1m cone, experience and surprise are guaranteed.



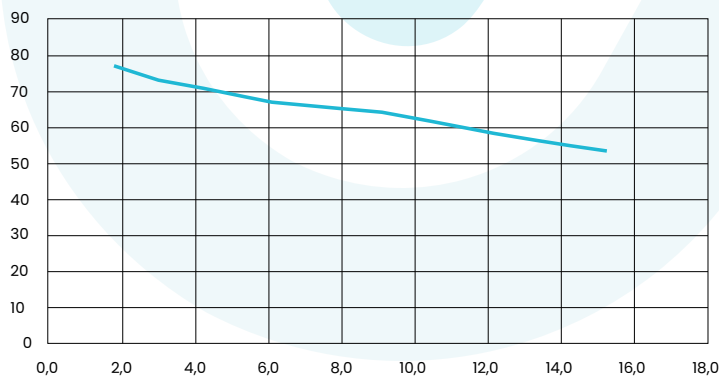
ACOUSTIC PERFORMANCE

- Bandwidth: from 300 Hz to 18 KHz*

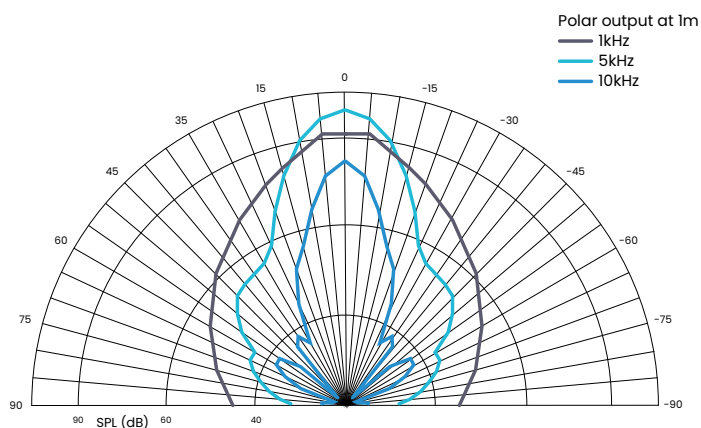


- Acoustic pressure (dB) as a function of distance (m) @ 1 KHz

SPL (dB) vs Distance (m) @ 1KHz



- Directionality



AUDIO

- Mono or stereo system
- Impedance : 10 K Ohms
- Amp input connectors: 1 RCA per channel
- Input connectors: Speaker: 2 banana type connectors
- Loudspeaker cables: Gauge 14, 2m supplied, limit installations
- Output connector to subwoofer: 1 RCA
- Carrier: proprietary profile around 40 KHz
- Proprietary and patented modulation

THERMAL INFORMATIONS

- Ambient operating temperature: 10 to + 40 ° C
- Storage temperature: from -20 to + 50 ° C

ELECTRIC

- Supply voltage: 100V-240V-50 / 60Hz
- Output voltage: 30V DC @ 1.5 amps

SIZE AND WEIGHT

- Speaker (cm): 31.75 x 16.20 x 4.40
- Fixing with two 10-320UNF 3/8 screws 5.72 cm apart
- Amplifier (cm): 15.88 x 17.15 x 4.76
- Weight: 3.4 kg for a stereo system

ACCESSORIES

- Fixing support (exists in black and white)



* Adequate mastering of the audio files will be necessary to take full advantage of the HyperSound system's broadcast spectrum.