

BrightSign®



HD110, HD210, HD410, HD810, and HD1010

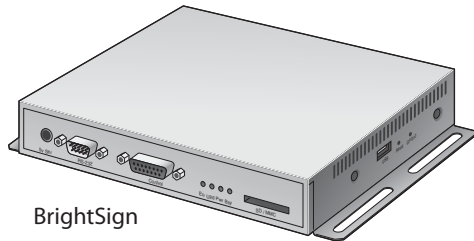
QUICK START GUIDE

Contents

What's in the box?	1
What is BrightSign?	2
Benefits	2
Capabilities	3
Models	4
Connecting a display	5
Using a VGA cable	5
Using an HDMI cable	6
Connecting speakers	7
Getting started with the online Quick Start kit	8
Creating and playing presentations	9
Creating a full-screen playlist presentation	9
Creating a multiple zone playlist presentation	16
Creating an interactive presentation	24
Connecting an input device	33

Adding BrightSign to a network	34
Next steps	34
BrightSign feature comparison	35

What's in the box?



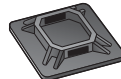
BrightSign



Rubber feet



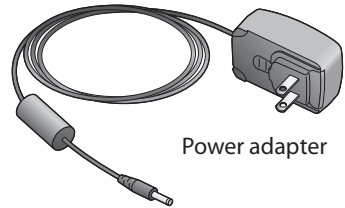
SD slot cover



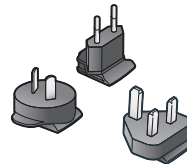
Cable mount



Cable tie



Power adapter



International prongs

TIP: Use the cable mount and cable tie to keep the cables securely attached to your BrightSign.

NOTE: The Quick Start Kit is available online at www.brightsign.biz/quickstart.

What is BrightSign?

Roku BrightSign is a standalone digital sign or kiosk controller. Because BrightSign is a non-PC device with no moving parts, it is durable, reliable, and an ideal solution for information kiosks, retail displays, museum exhibits, and other applications.

Benefits

- Easy to use
- Astonishing full HD quality
- Reliable solid state platform
- Custom interactivity and control
- Powerful zones and synchronization
- Versatile networking options

Capabilities

You can use BrightSign to do any combination of the following:

- Play content from a Secure Digital card (SD or SDHC card) or USB Flash drive
- Display content on a high-definition monitor or TV
- Play looping video, images and music in HD
- Use zones to divide the display into separate content windows to playback video and images simultaneously
- Play live video using the full screen or in a window using a USB video dongle accessory (sold separately)
- Schedule content to play at a specific time (hour, day, month, year)
- Easily create looping displays
- Display RSS feeds and other network information
- Run interactive presentations that playback content based on inputs such as buttons, touch screens, mice, and more
- Synchronize video playback across multiple BrightSign units
- Update software and content remotely with BrightSign networking

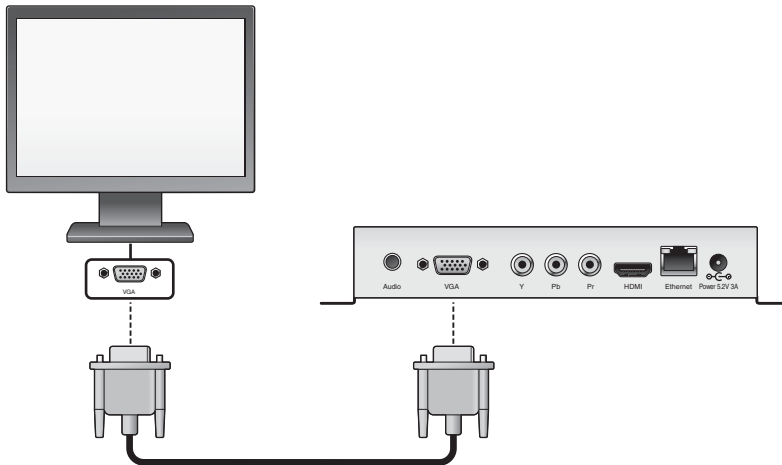
Models

Looping HD video playlists	Interactivity and control	Networking for remote content delivery and reporting
BrightSign HD110 <ul style="list-style-type: none">• Simple looping video playback• Full HD• Playlists and zones	BrightSign HD410 <ul style="list-style-type: none">• All HD110 features• Basic interactivity via buttons, GPIO controls, and serial devices• Synchronization for video wall implementations	BrightSign HD210 <ul style="list-style-type: none">• All HD110 features• Networking support for remote content update, reporting, live data feeds, and more
	BrightSign HD810 <ul style="list-style-type: none">• All HD410 features• Full interactivity including touch screens and USB devices• Schedule content by time/date• Live video feed• Support for A/V expansion module accessories	BrightSign HD1010 <ul style="list-style-type: none">• All HD810 features• Networking support

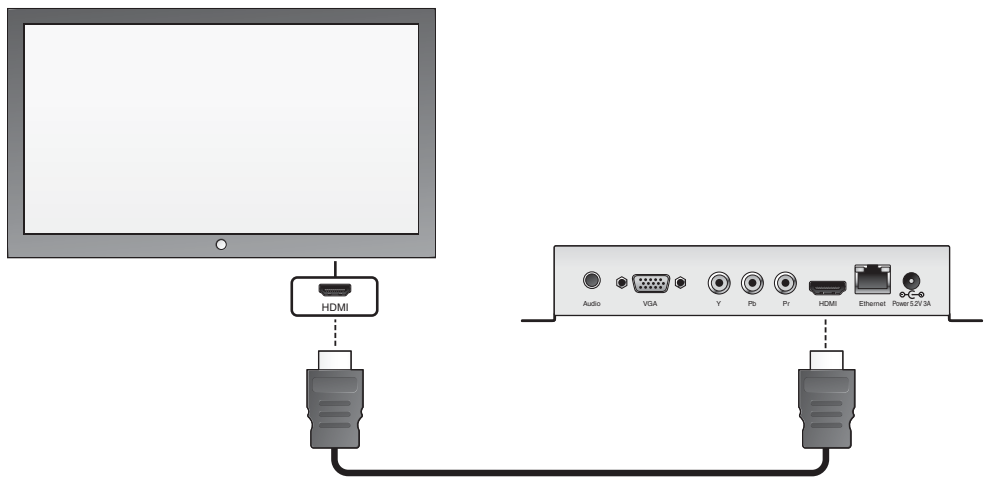
NOTE: For details on the features of each BrightSign model, see “BrightSign feature comparison” on page 35.

Connecting a display

Using a VGA cable

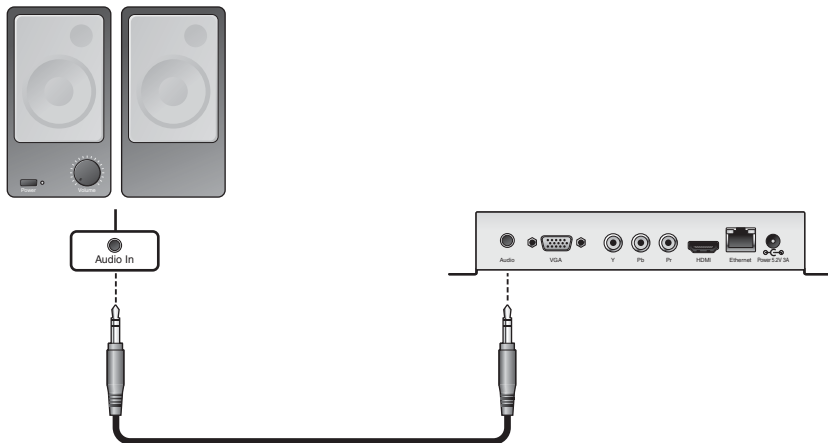


Using an HDMI cable



Connecting speakers

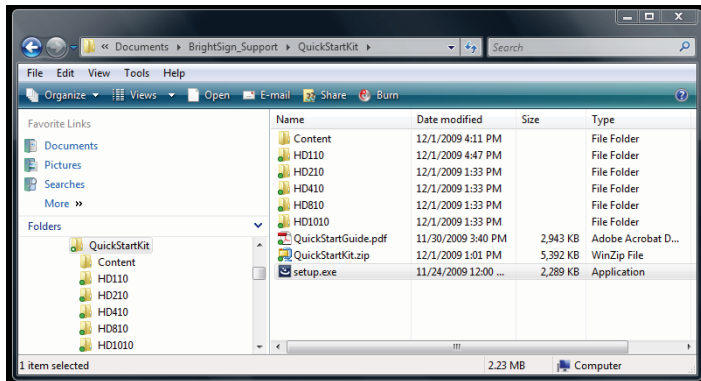
If your presentations include audio, you can route the audio through an HDMI display that you connected to your BrightSign, or you can connect powered speakers to your BrightSign.



Getting started with the online Quick Start kit

This section provides step-by-step instructions on how to create your first BrightSign presentations using BrightAuthor 2.0 and the online Quick Start kit.

- 1 Download the **QuickStart.zip** file from www.brightsign.biz/quickstart.
- 2 Unzip the file to a location on your PC.
- 3 Double-click the **Setup.exe** file, and follow the onscreen instructions to install the BrightAuthor 2.0 software.



Creating and playing presentations

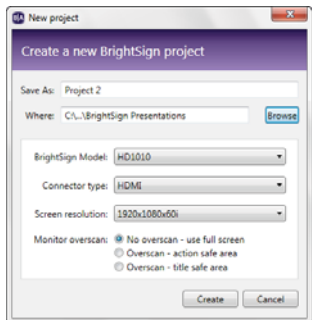
This guide describes how to create three types of presentations. See the corresponding sections in this guide to learn more about creating each type of presentation:

- Full-screen playlist presentation (see page 9).
- Multiple zone playlist presentation (see page 16).
- Interactive playlist presentation (see page 24).

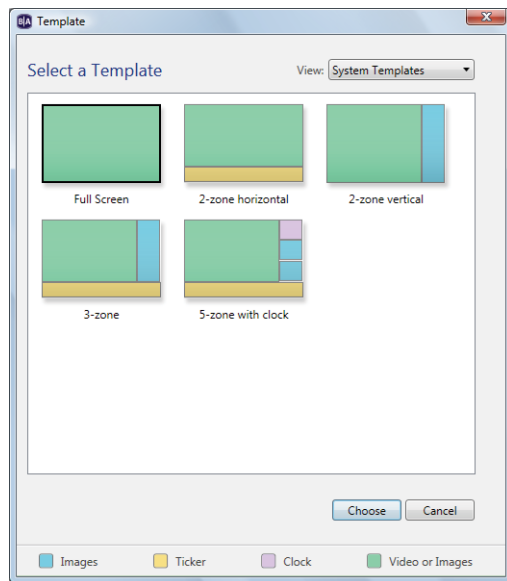
Creating a full-screen playlist presentation

A playlist enables you to play one or more files in a loop. This section shows you how to create a playlist using BrightAuthor 2.0 and the sample files provided in the Quick Start kit.

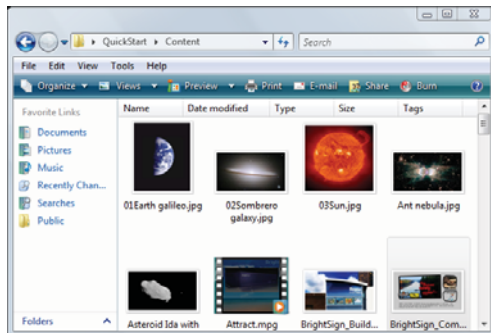
- 1 Create a new BrightSign project:
 - a Double-click the **BrightAuthor** icon on your desktop.
 - b In the **Save As** field, enter a name for the presentation.
 - c In the **Where** field, click **Browse** to select the folder where you want to store the presentation.
 - d Select your **BrightSign Model**, **Connector type**, and **Screen resolution**.
 - e Click **Create**.



2 Select the **Full Screen** template.

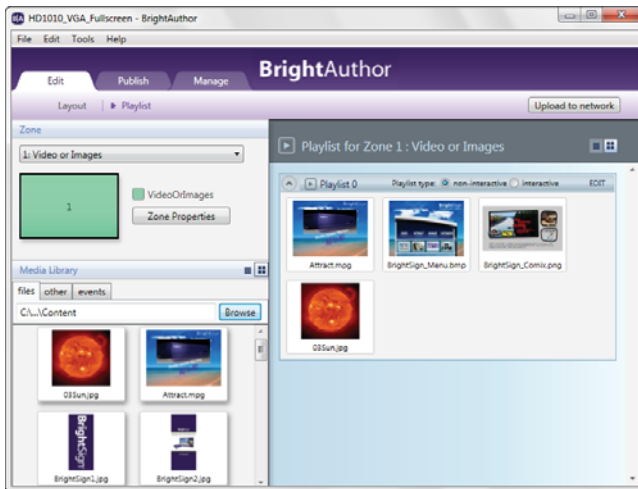


3 Under Media Library, click **Browse** and select the **QuickStart/Content** folder.



4 Drag one or more files to the playlist bar.

TIP: To set the order in which files play, just drag the files to the desired position in the playlist.



5 Publish the presentation on your SD card:

a Insert an SD card into your card reader.

b Click the **Publish** tab on the upper-left side of the screen.

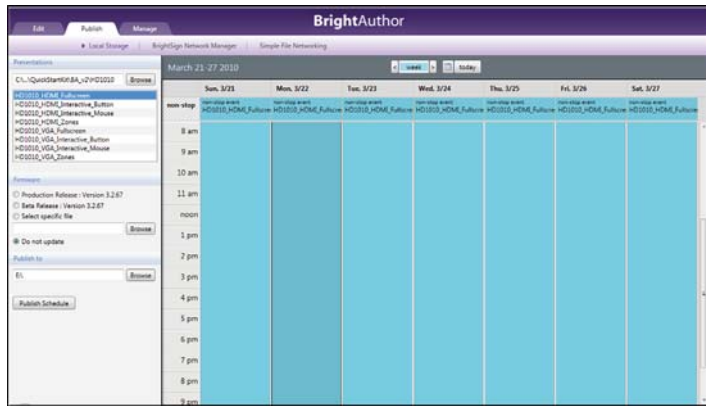
c Click **Local Storage** (below the Publish tab).

d Under **Presentations**, click **Browse**, select the folder where your presentation is located, and then click **OK**.

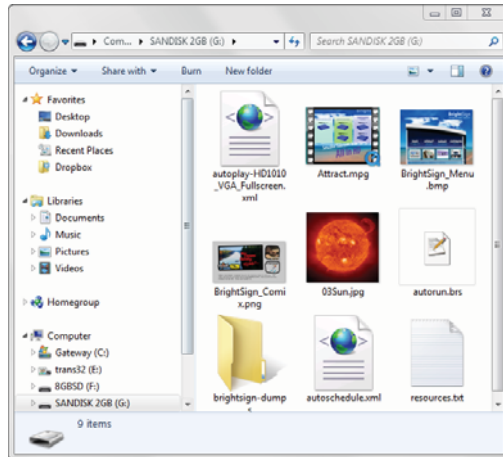
e Select the presentation you want to publish from the list of presentations.

f Under **Publish to**, click **Browse**, select the drive where your SD card is located, and then click **OK**.

g When the Publish complete message appears, click **OK**.



The following image shows an example of an SD card with a sample playlist:



To make changes to the sample full-screen project files:

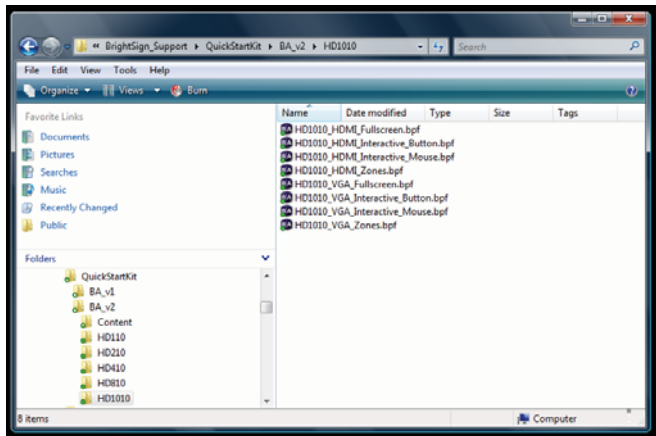
1 In BrightAuthor, select **File > Open**.

2 Locate the **Quick Start Kit** folder and select the folder for your BrightSign model to see the sample project files.

3 Do one of the following:

- If your BrightSign is connected to your display via an HDMI connection, select the **HDMI_fullscreen.xml** file.
- If your BrightSign is connected to your display via a VGA connection, select the **VGA_fullscreen.xml** file.

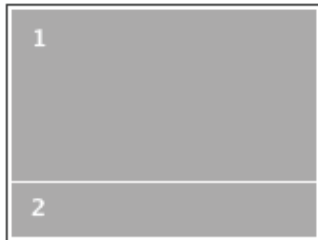
4 When prompted to locate one of the files in the project, click **Browse**, locate the **QuickStartKit\Content** folder, and then select a file in that folder.



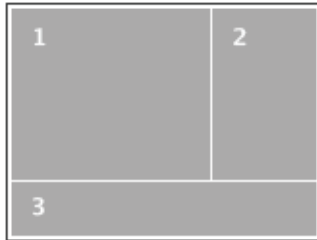
Creating a multiple zone playlist presentation

With BrightSign zones you can divide the screen into windows and play different types of content in each window, including video, images, ticker feeds (RSS or text), or a clock. You can also control transitions, background color, background image, font, text color, text alignment, and text orientation.

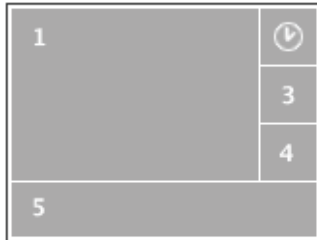
Below are a few examples of BrightSign zone templates:



Template:
2-zone horizontal



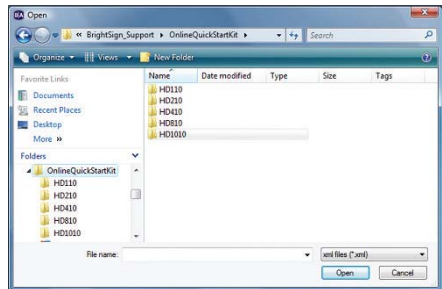
Template:
3-zone

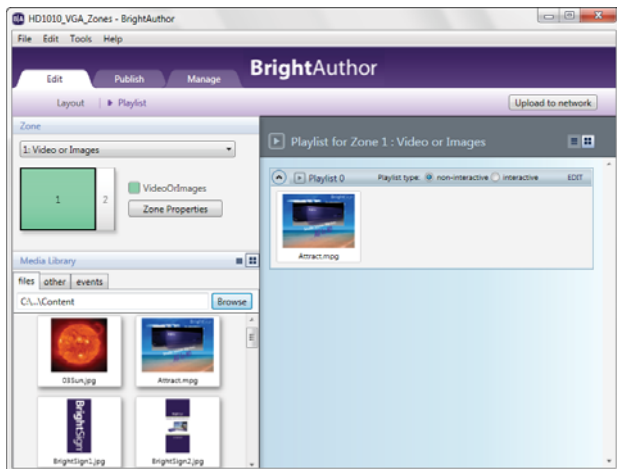


Template:
5-zone with clock

To create a presentation with zones in BrightAuthor 2.0:

- 1 Double-click the **BrightAuthor** icon on your desktop.
- 1 Select **File > Open**.
- 2 Navigate to the **Quick Start Kit** folder on your PC, and select the folder for your BrightSign model to see the sample files.
- 3 Do one of the following to open the BrightAuthor project:
 - If your BrightSign is connected to your display via an HDMI connection, select the **HDMI_zones.xml** file.
 - If your BrightSign is connected to your display via a VGA connection, select the **VGA_zones.xml** file.
- 4 When prompted to locate one of the files in the project, click **Browse**, locate the **QuickStartKit\Content** folder, and then select a file in that folder.



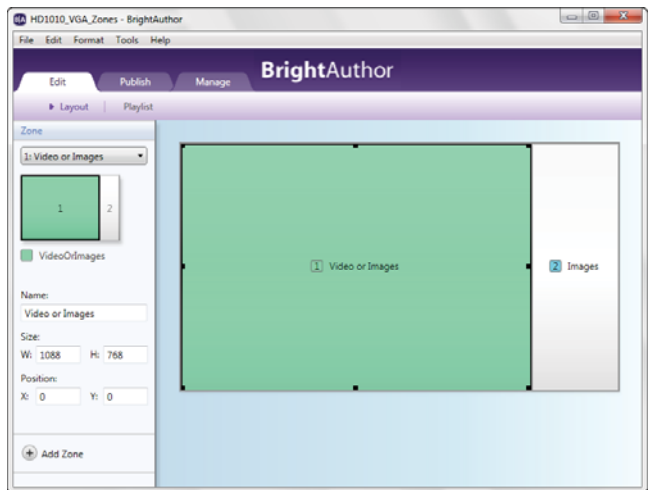


The image above shows the default project file.

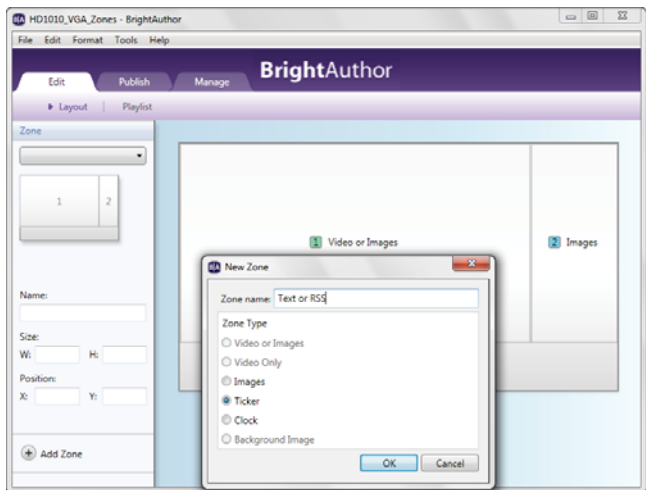
- Zone 1 is a Video or Images zone. You can add videos, images, or audio files in this type of zone. There can be only one Video zone on the screen at a time.
- Zone 2 is an image zone. You can add images to this type of zone.
- We're going to resize Zones 1 and 2 and then add and populate Zone 3.

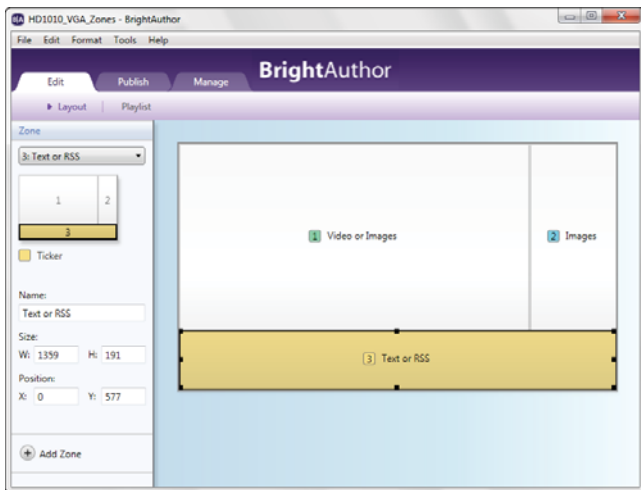
5 Resize the existing zones:

- a Click **Layout** (on the upper-left side of the screen under Edit).
- b Select and drag the bottom of the **VideoOrImages** zone to make the zone shorter.
- c Select and drag the bottom of the **Images** zone to make both zones the same height.



- 6 Add a new zone:
- Click **Add Zone**, select **Ticker**, and then click **OK**.
 - Drag the **Ticker** zone to the lower left corner.
 - Select and drag a corner of the **Ticker** zone and resize it to fit below the other two zones.

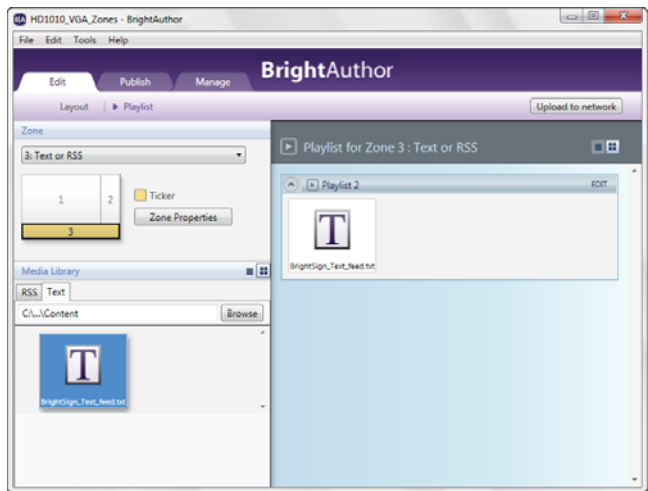




Zone 3 is a Ticker zone. You can add RSS feeds and Text files in this type of zone. You can mix both RSS and Text files, and use multiple RSS and Text files in the same zone.

7 Populate the Ticker zone:

- a Click **Playlist** (on the upper-left side of the screen next to Layout).
- b Under Zone, click **Zone 3**; this is the Ticker zone.
- c Under Media Library, click the **Text** tab.
- d Click **Browse**, locate the **QuickStartKit\Content** folder, and then click **OK**.
- e Drag the **BrightSign_Text_fee d.txt** file to the Zone 3 playlist bar.



NOTE (HD210 and HD1010 only): To add an RSS feed instead of a text file, follow the steps above, but replace steps 7c–7e with the following: click the **RSS** tab, drag the **New RSS Feed** icon to the playlist, and enter the location (URL) for the feed. (Internet connection required.)

8 Publish the presentation on your SD card:

a Insert an SD card into your card reader.

b Click the **Publish** tab on the upper-left side of the screen.

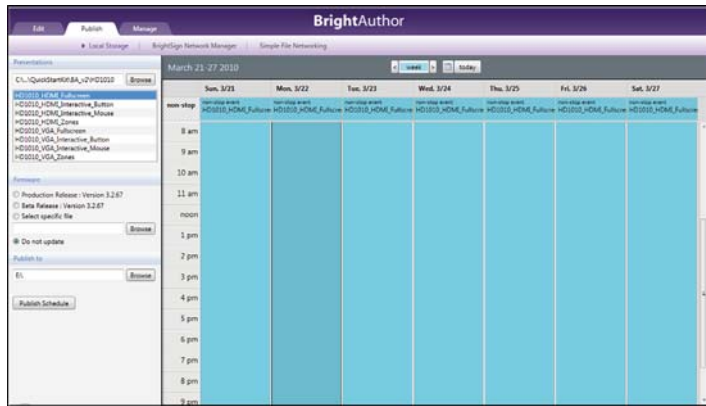
c Click **Local Storage** (below the Publish tab).

d Under **Presentations**, click **Browse**, select the folder where your presentation is located, and then click **OK**.

e Select the presentation you want to publish from the list of presentations.

f Under **Publish to**, click **Browse**, select the drive where your SD card is located, and then click **OK**.

g When the Publish complete message appears, click **OK**.

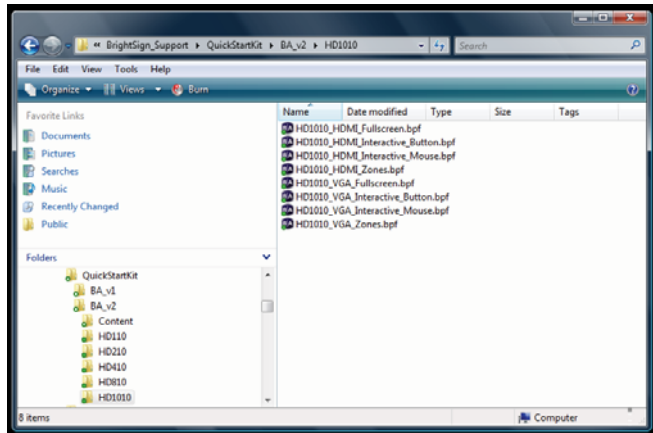


Creating an interactive presentation

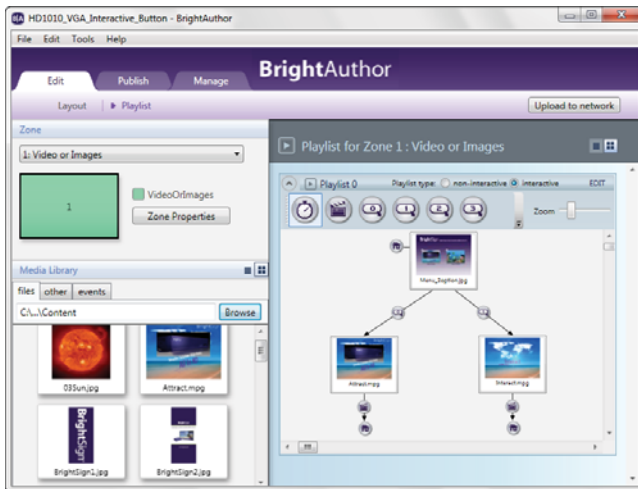
With BrightSign HD410, HD810, and HD1010 you can create an interactive presentation that responds to user input from buttons or other GPIO devices, or from devices such as motion sensors or devices connected to the RS232 port that generate serial commands. The HD 810 and HD1010 also support input for interactivity from USB devices such as touch screens, mice, keyboards, and barcode scanners, and the HD1010 also supports input for interactivity via the Ethernet port.


To create an interactive presentation in BrightAuthor 2.0:

- 1 Double-click the **BrightAuthor** icon on your desktop.
- 1 Select **File > Open**.
- 2 Navigate to the **Quick Start Kit** folder on your PC, and select the folder for your BrightSign model to see the sample files.

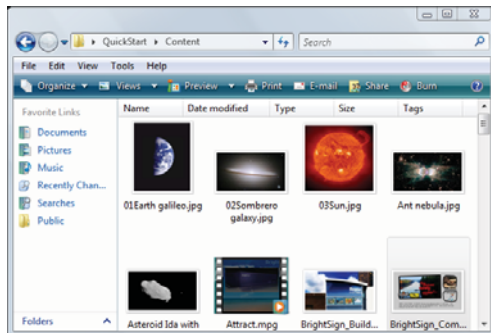


- 3 Do one of the following to open the BrightAuthor project:
 - If your BrightSign is connected to your display via an HDMI connection and you have a button board attached to your BrightSign, select the **HDMI_buttons.xml** file.
 - If your BrightSign is connected to your display via a VGA connection and you have a button board attached to your BrightSign, select the **VGA_buttons.xml** file.
 - (HD810 and HD1010 only) If your BrightSign is connected to your display via an HDMI connection and you have a mouse attached to your BrightSign, select the **HDMI_mouse.xml** file.
 - (HD810 and HD1010 only) If your BrightSign is connected to your display via a VGA connection and you have a mouse attached to your BrightSign, select the **VGA_mouse.xml** file.
- 4 When prompted to locate one of the files in the project, click **Browse**, locate the **QuickStartKit\Content** folder, and then select a file in that folder.

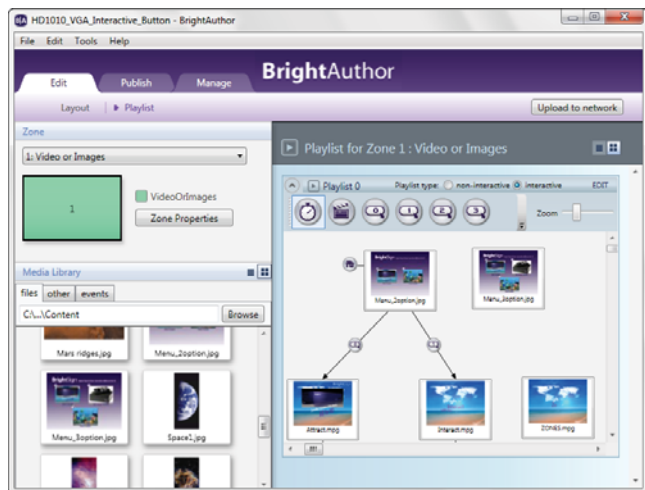


The image above shows the default project file. The **Home**  icon indicates that this is the first file in the playlist. We're going to change the starting menu image and add a third video to the playlist.

5 Under Media Library, click **Browse** and select the **QuickStart/Content** folder.



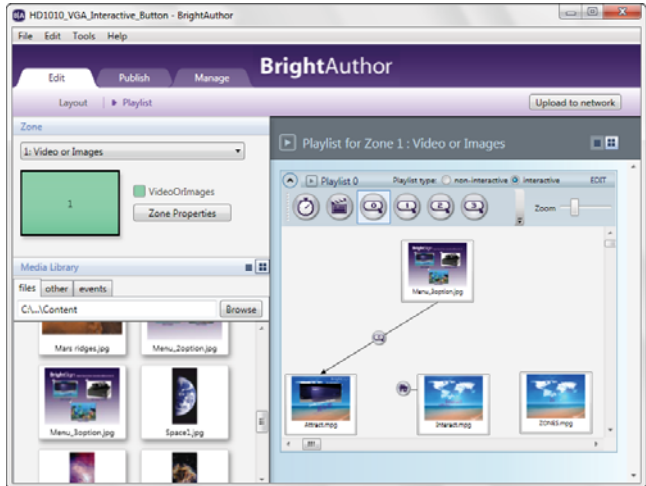
- 6 Drag the following files to the playlist bar on the right side of the screen:
- a Menu_3option.jpg
 - b Zones.mpg
- 7 In the playlist bar (on the right side of the screen), click **Menu_2option.jpg** and then press **Delete** on your PC keyboard. This removes the button transitions as well as the menu image.



- 8 Connect the new Menu image to the Attract video so that if the Menu is playing, and you press Button 0, the Attract video plays.

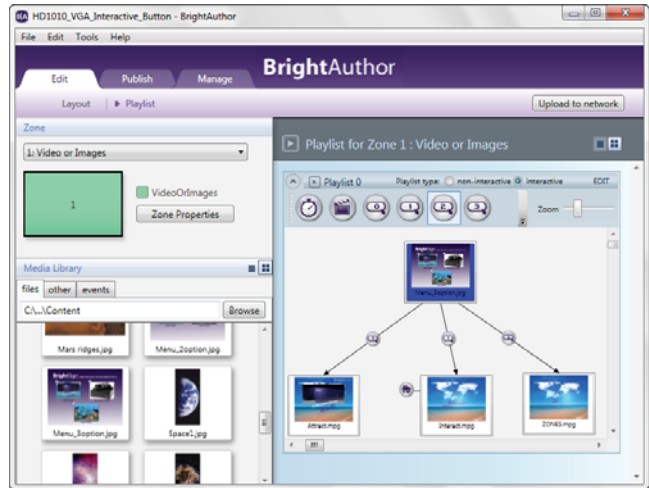
To make the connection:

- Click **Button 0** on the event bar.
 - Click the bottom of **Menu_3option.jpg** (the pointer changes to a hand).
 - Drag the hand pointer from the bottom of **Menu_3option.jpg** to the top of **Attract.mpg**.
- 9 Connect the Menu to the Interact and Zones videos so that if the Menu is playing, and you press Button 1, the Interact plays, and if you press Button 2, the Zones video plays.



To make the connections:

- a Click **Button 1** on the event bar.
- b Click the bottom of **Menu_3option.jpg** (the pointer changes to a hand).
- c Draw a line to **Interact.mpg**.
- d Click **Button 2** on the event bar.
- e Click the bottom of **Menu_3option.jpg**.
- f Draw a line to **Zones.mpg**.



10 Connect the end of the Attract, Interact, and Zones videos to Menu_3option so that the menu reappears when the videos finish playing.

To make the connections:

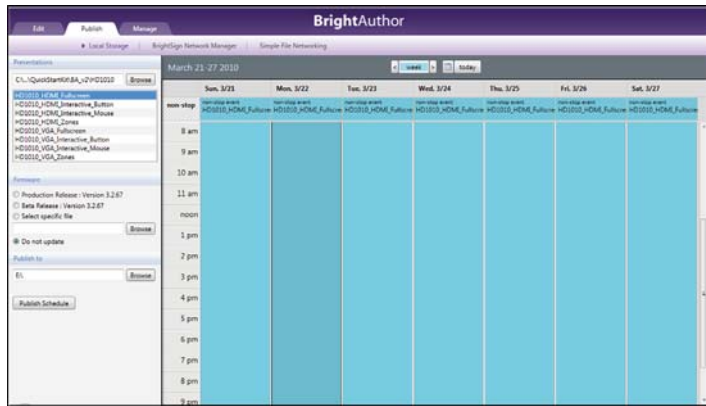
- a Click **Media End** on the event bar.
- b Click the bottom of **Attract_mpg**.
- c Draw a line to **Menu_3option.jpg**.
- d Click the bottom of **Interact_mpg**.
- e Draw a line to **Menu_3option.jpg**.
- f Click the bottom of **Zones.mpg**.
- g Draw a line to **Menu_3option.jpg**.
- h Double-click **Menu_3option.jpg** and check the **Set as initial state** box.



NOTE: If you do not add a Media End event after each video, the videos will loop indefinitely.

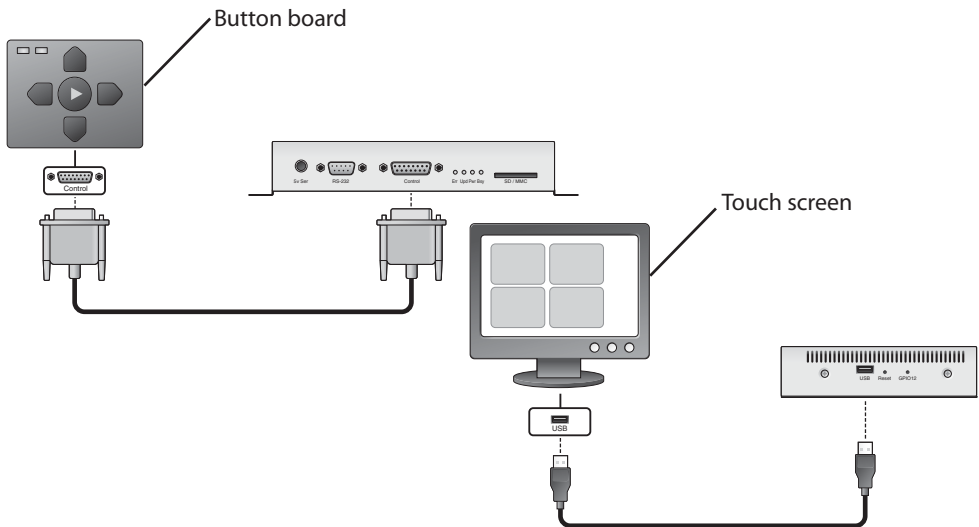
11 Publish the presentation on your SD card:

- a Insert an SD card into your card reader.
- b Click the **Publish** tab on the upper-left side of the screen.
- c Click **Local Storage** (below the Publish tab).
- d Under **Presentations**, click **Browse**, select the folder where your presentation is located, and then click **OK**.
- e Select the presentation you want to publish from the list of presentations.
- f Under **Publish to**, click **Browse**, select the drive where your SD card is located, and then click **OK**.
- g When the Publish complete message appears, click **OK**.



Connecting an input device

To play interactive presentations, you need to connect an input device to your BrightSign. The following illustrations show how to connect a button board and touch screen:



Adding BrightSign to a network

When you add your BrightSign HD210 or HD1010 to a network, you can update your content and the BrightSign software remotely and securely. Please contact support@brightsign.biz for details on using your BrightSign with BrightSign Network or BrightSign Simple Network.

Next steps

To get the most from your BrightSign, download the latest software, read the latest documentation, and play other demonstrations.

- **Documentation:** Get the latest User Guides, Release Notes, Scripting references, Hardware reference manuals, and Regulatory Guide at: www.brightsign.biz/support/userguide.php
- **Demos:** Get an overview of what BrightSign is capable of: interactivity, looping, high definition, and multiple content zones on a single screen. Download demos at: www.brightsign.biz/support/demos
- **Downloads:** Get the latest BrightSign software, Autoplay script, scripts for manually setting the date & time, and scripts for testing button boards at: www.brightsign.biz/support/download.php
- **Support:** Get answers to your questions on the support website: www.brightsign.biz/support
—or—
Contact technical support at: www.brightsign.biz/support/contact_form.php



BrightSign feature comparison

Features	HD110	HD210	HD410	HD810	HD1010
Looping playlist support	X	X	X	X	X
Basic interactivity (via GPIO port supporting buttons and LEDs)			X	X	X
Advanced interactivity (buttons, touch screens, LEDs, and any USB device such as speakers, keyboards, mice, more)				X	X
Playback scheduling		X		X	X
Synchronization (video sync of multiple displays)		Ethernet	X	X	Ethernet
Zones (multiple content windows on single screen)	X	X	X	X	X
Text ticker feed and subtitles	X	X	X	X	X
RSS ticker feed		X			X
Networking for remote content delivery		X			X
Media formats*	HD110	HD210	HD410	HD810	HD1010
Video: H.264 MPEG4 transport streams (TS) with AAC audio, MPEG-2 transport streams (TS), MPEG-2 program streams, and MPEG-1 system streams, with MP2 and MP3 audio. Supported file extensions: TS, VOB, and MPG	X	X	X	X	X
Image: BMP, PNG, JPEG (JPG)	X	X	X	X	X
Audio: MP3	X	X	X	X	X
Display resolutions	HD110	HD210	HD410	HD810	HD1010
1080p (HDMI)	X	X	X	X	X
1080i, 720p, 576p, 480p (HDMI & component)	X	X	X	X	X
1360x768, 1024x768 (HDMI & VGA)	X	X	X	X	X

Connectors	HD110	HD210	HD410	HD810	HD1010
SDHC slot	X	X	X	X	X
VGA out	X	X	X	X	X
Component video out				X	X
HDMI out (DVI via adaptor)	X	X	X	X	X
GPIO control port (8 bi-directional)			X	X	X
RS232			X	X	X
5V serial mini jack			X	X	X
Reset button				X	X
USB host port				X	X
Ethernet 10/100		X			X
Analog stereo audio out (stereo 1/8" line level)	X	X	X	X	X
Miscellaneous	HD110	HD210	HD410	HD810	HD1010
Dimensions (without mounting brackets or connectors)	168mm (W) x 149mm (D) x 30mm (H) or 6.6" (W) x 5.9" (D) x 1.2" (H)				
Weight	630 grams or 20.3 oz.				
Power	5V / 3.0A				
International power supply & regulatory approvals	X	X	X	X	X
Wall mounting brackets	X	X	X	X	X
1 year warranty (parts and labor)	X	X	X	X	X

* We're adding support for more media formats. For a current list of supported file types see the latest *Quick Start Guide* and *User Guide* at www.brightsign.biz/support.

Copyright © 2010 by BrightSign, a division of Roku, Inc. All rights reserved. Roku, the Roku logo and the BrightSign logo are registered trademarks of Roku, Inc. Other brand and product names are trademarks or registered trademarks of their respective holders.

BrightSign 12980 Saratoga Ave. Suite D, Saratoga, CA 95070

www.brightsign.biz

DOC-005-04