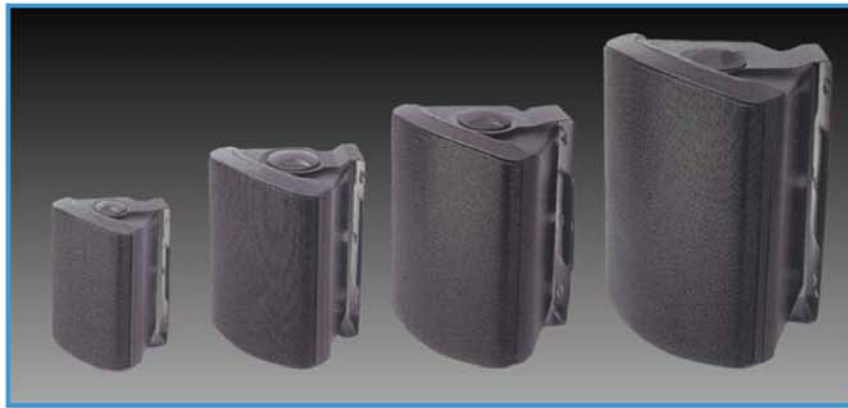


VSP Speaker

- Injection moulded weather resistant cabinet
- Strong bass response with high power/size
- Suitable for indoor/outdoor applications



The VSP range is specifically designed for applications that demand quality sound reproduction with maximum installation flexibility.

The VSP range also comes with a multi position U shaped mounting bracket for optimum installation flexibility.

Model Details:-

	VSP 302
Enclosure Type	Infinite Baffle
Frequency Range	80 – 20 KHz
Sensitivity (1w / 1m)	86db
Nominal Impedance	8 ohm
Long Term Power	40 watts
Weight (per speaker)	1 Kg
Terminal	Spring Clip
Bass Driver	90 mm
HF Driver	13 mm
100v line option	Yes 1w/2w/4w /7.5w/15w switchable
Dimensions	w13 x h19 x d11cm