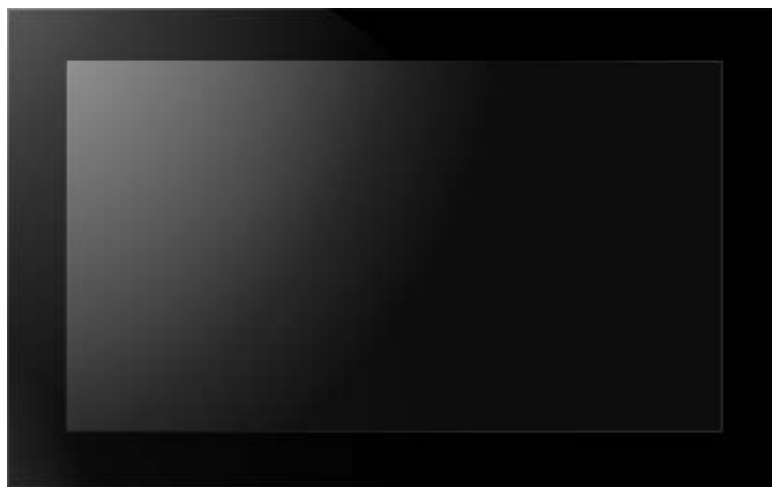


46"-82" High Definition Digital Advertising Display

User's Manual



Manual Version PF46-82HD1.0



24/7 usage



HD high definition



multiple inputs



wide viewing angle



eco-friendly power timer



plug & play



lock protected compartment



image, video & music

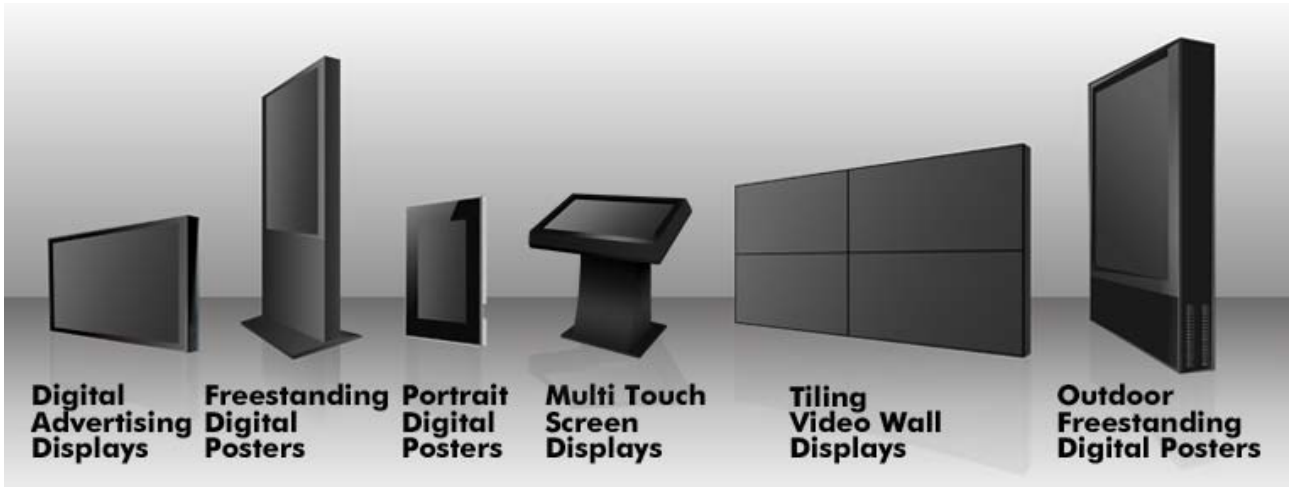


scheduling software



remote control

Our Full Product Range



Safety Instructions



- Please keep the display away from any heat sources. Place the display in a stable and well-ventilated place.
- Please handle with care as product contains glass.
- The holes or openings on the display are designed for ventilation. Do not cover or block the ventilation holes or openings with any objects.
- Remove protective covering from the screen before you use the display.
- Shut off the power supply before cleaning. Use a soft lint-free cloth instead of a tissue to wipe the screen.
- You may use a glass cleaner to clean the product as required. However, never spray the cleaner directly onto the display surface.
- Do not attempt to repair this product yourself! Improperly disassembly of the product may invalidate the warranty and lead to possible danger
- If you have a problem that cannot be solved using the "Troubleshooting" guidelines, please contact your supplier.

Quick Start Guide

This section of the guide is to allow rapid set up and use of the unit. Please refer to the main part of the User Guide for full information on use of the unit.

Please follow the steps detailed below:

1. Unpack unit and place in desired location
2. Take the power lead from the accessories bag, insert the lead into screens and connect to mains outlet. The unit will power ON automatically. You will be greeted by the start-up screen.
3. Collect the files you wish to display and make sure they are supported by the unit (see Section 2.2)
4. On a PC copy the files you want to play onto an empty USB drive. These should be in the root directory (without putting them into a folder). Remove USB from PC.
5. Insert USB drive into the USB port located on the on the bottom of the unit (see Figure 1).
The screen should indicate that it is copying the files onto the unit. Please note that all files currently resident in the unit will be deleted. Once completed, the screen will display a message to remove the USB drive.
6. Remove the USB drive and the unit will play the stored files in a loop.



Figure 1 Position of screen inputs

Contents:

1.	Introduction	6
1.1	Box Contents	6
1.2	Product Overview.....	6
1.3	Remote Control	7
1.4	Replacing the Remote Control Battery	8
1.5	Menu Operation.....	9
2.	System Operation	15
2.1	System Functions	15
2.2	Supported Media Files	16
2.3	Steps to Load Media Files	17
2.4	Inputs	17
3.	Installation	18
3.1	Wall Mounting.....	18
4.	Advanced Guide.....	19
4.1	Main Menu.....	19
4.2	Creating Playlists	19
4.2.1	Add Schedule.....	20
4.2.2	Add Selected Items.....	20
4.2.3	Saving	22
4.3	Editing Playlists.....	23
4.3.1	Deleting Items	23
5.	F.A.Qs and Troubleshooting Guide	24
5.1	How do I play PowerPoint presentations on my display?	24
5.1.1	Option 1 (for plain slides with no animation):	24
5.1.2	Options 2 (for presentations with animation):	24
5.2	Wireless connection.....	25
5.3	Video Conversion	25
5.3.1	Format Factory	25
5.3.2	HD Video Converter Deluxe	27

5.4	Connecting screen to PC	28
5.5	My Remote Control does not appear to be working	28
5.6	My media file does not fit properly on the screen	29
5.7	My media file will not display or is missing from the playlist	29
5.8	My media files will not update.....	30
5.9	My media will not loop	30
6.	Full Range Specifications	31

Table of Figures

Figure 1	Position of screen inputs.....	3
Figure 2	Product Overview.....	6
Figure 3	Screen inputs.....	17

1. Introduction

Congratulations on your purchase of our product. Please read carefully and follow all instructions in the manual before first use.

The product should not be exposed to liquids dripping or splashing and no objects filled with liquids, such as vases, should be placed on the product.

For user convenience, a number of operations can be performed through the remote control.

Attention:

1. Do not change any default setting when it is unnecessary.
2. Keep the product far away from water during installation and use.

1.1 Box Contents

- 1xDigital Advertising Display
- 1xWall Mount
- 1xPower Cable
- 1xCD (User Manual and Software)
- 1xRemote Control
- 2xKey

1.2 Product Overview

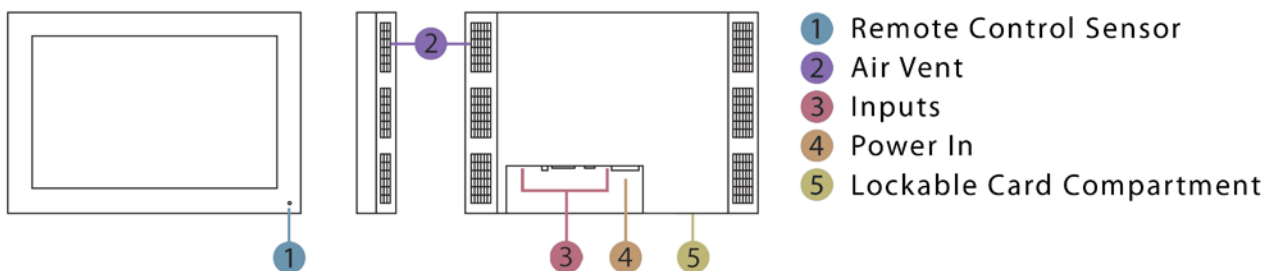


Figure 2 Product Overview

1.3 Remote Control



Remote instruction

Button	Description
POWER	Power on or off
⏮	previous program
⏭	Next program
+ (volume)	Raise volume
- (volume)	Lower volume
PLAY/PAUSE	Play/Pause, Confirm selection
↑	Up, navigation button
→	Left, navigation button
↓	Down, navigation button
←	Right, navigation button
STOP	Stop the selected file
SETUP	Menu setting

1.4 Replacing the Remote Control Battery

1. Open the battery cover
2. Take out the battery box in the right direction as shown in the picture below
3. Remove the used battery
4. Insert the new battery with its terminals corresponding to the indicator
5. Put the cover back in



1.5 Menu Operation

Main Menu includes following sub-menus: Input Source, System, Display, Clock Setup, ON/OFF Time Setup and Volume Setup.

Press "SETUP" to enter Main Menu, press \uparrow / \downarrow to select the right item, press "PLAY" to confirm selection. Choose EXIT to exit the Main Menu.

Main Menu
Input Source
System
Display
Clock Setup
ON/OFF Time Setup
Volume Setup
EXIT

Input Source:

The default input is Storage, press \uparrow / \downarrow to select another input source, press "PLAY" to confirm selection.

Input Source
Storage
YPbPr
HDMI
AV
VGA
Return Main Menu

System:

System	
Language:	ENGLISH
Show time:	OFF
Clock mode:	-- : --
Encrypt:	
Auto play system:	
Seamless play:	OFF
Photo time:	10 Seconds
Restore default:	
Return	

> Language: 简体中文, ENGLISH

> Clock: Turn the display clock ON/OFF, the default mode is OFF

> Clock Mode: --:--:--:--:--

> Auto Play System: Play Media, Function Mode, Time Mode

Play Media: Play programs stored in CF card automatically

Auto play system			
Auto Play Configuration		Play Media	
	Play	Port	Time Set
	1	Storage	0 : 00
	Start Time	Port	End Time
OFF	0 : 00	Storage	0 : 0
OFF	0 : 00	Storage	0 : 0
OFF	0 : 00	Storage	0 : 0
OFF	0 : 00	Storage	0 : 0
Return			

Function Mode: programs can be played repeatedly according to pre-setup time.

Press ←→ button to select item and press ↑↓ to set up parameter.

Auto play system			
Auto Play Configuration		Function Mode	
	Play	Port	Time Set
	1	Storage	0 : 00
	Start Time	Port	End Time
OFF	0 : 00	Storage	0 : 0
OFF	0 : 00	Storage	0 : 0
OFF	0 : 00	Storage	0 : 0
OFF	0 : 00	Storage	0 : 0
Return			

Time Mode: It will play according to programmed schedule. There are 4 time periods to set up.

> Seamless Play: The video file will play seamlessly if this function is turned ON. Factory default mode is OFF

Note: If this function is turned ON, the file format should be the same (including AV resolution, frame rate and other specification), otherwise there will be intervals between each file.

> Photo Time: Set image display time from 5 seconds to 60 seconds.

> Restore Default: Restore all parameters to factory mode



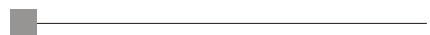

Display:

> Set screen Brightness, Contrast, Color (Saturation), Sharpness, Tint

DISPLAY	
Brightness	50
Contrast	50
Color	55
Sharpness	50
Tint	0
Aspect ratio	Full
PC setting	
Return main menu	

> PC Setting: only applicable with VGA port

- Auto Adjust: adjusts automatically according to the input signal
- Horizontal Pos. / Vertical Pos.: adjusts the position of the image on the screen
- Clock: adjusts the clock
- Phase: adjusts the phase

PC SETTING	
Auto Adjust	
Horizontal Pos. 	50
Vertical Pos. 	50
Clock 	0
Phase 	60
Return main menu	

Clock Setup:

Press ←→ button to select item and press ↑↓ setup parameter.

CLOCK SETUP					
CURRENT TIME			Jun/14 12:55		
2010	Year	Jun.	Month	14	Date
12	Hour	55	Minute		
Confirm					
Return main menu					

ON/OFF Time Setup:

It can be set to two modes: Uniform Mode, Week Mode

Uniform Mode: Set it for the whole week, for example, turn it ON at 8 am, and turn it OFF at 10 pm.

Factory default is ON. Press ←→ button to set up ON/OFF mode and press play to confirm selection.

ON/OFF Time Setup			
ON/OFF Mode		Uniform Mode	
Everyday			
ON/OFF Mode		Normally ON	
	Active	ON Time	OFF Time
Range1	OFF	0: 00	0: 00
Range 2	OFF	0: 00	0: 00
Range 3	OFF	0: 00	0: 00
Return Main Menu			

Week Mode: Set it for every day within one week, for example, set it ON/OFF mode from Mon. to Fri., and set it to always OFF at weekend.

There are three ON/OFF mode: Normally ON, Always OFF, ON/OFF setup.

Normally ON: the player keeps turned ON once power is connected.

Normally OFF: the player will turn OFF after two minutes if there is no operation.

ON/OFF Time Setup: 3 groups of ON/OFF setup provided in the menu.

Press ←→ button to set up ON/OFF mode and press "PLAY" to confirm selection.

Note: factory default is Normally ON.

ON/OFF Time Setup			
ON/OFF Mode		Week mode	
Friday			
ON/OFF Mode		ON/OFF setup	
	Active	ON Time	OFF Time
Range1	OFF	0: 00	0: 00
Range 2	OFF	0: 00	0: 00
Range 3	OFF	0: 00	0: 00
Return Main Menu			

Volume Setup:

Press "VOLUME +" or "VOLUME -" to adjust volume or press ←→ button to select.

VOLUME SETUP	
DEFAULT VOLUME	30
Range1	OFF
Range 2	OFF
Range 3	OFF
Confirm	
Return Main Menu	

Press "PLAY" to set up volume of each range, press ↑↓ to select the right item. Choose Return to exit. See below drawing.

VOLUME SETUP		
DEFAULT VOLUME		
	active	OFF
Range1	Start Hour	00
Range 2	Start min	00
Range 3	End Hour	00
	End min	00
	Volume	0
Confirm		
Return Main Menu		

2. System Operation

2.1 System Functions

1. Auto Copy Function: import the media file from flash disk to memory card automatically.
2. Auto Play System: users can set times to switch input signal from different ports and internal storage.
3. Timer ON/OFF function.
4. Seamless Play: no black screen when program switching by following the below requirements:
 - 1) All of the media files should be the same format, for example it can support suffix **.TS** **OR** **.MPG** video file, not both.
 - 2) The resolution, codec, code rate, frame rate should be the same for all video files, and the audio coder, sample rate should be the same for all audio files.

Note: If playing high definition (HD) combine with standard definition (SD) video file, it should:

- 1) Use video converter (like Ulead Video Studio) to convert the SD and HD video files to be one HD video program.
- 2) Use video converter (like Ulead Video Studio) to convert the resolution, codec and frame rate of SD file to be the same as the HD video file.

2.2 Supported Media Files

Regular play	
Video Codec	Container
MPEG1, 2	MPG, MPEG
MPEG2, H.264	MPEG2 –TS
	H264-TS
MPEG2	MPEG2 –PS
MPEG4	AVI, MP4
Xvid 1.00	
Xvid 1.01, Xvid 1.02, Xvid 1.03, Xvid 1.10-beta1/2	
H.264	
H.264, MPEG1, 2, 4	MKV
Seamless play	
Video Codec	Container
MPEG1, 2	MPG, MPEG
MPEG2, H.264	MPEG2 –TS
	H264-TS
Audio Codec	Suffix
MP3	.mp3

1. Supported video files include: MPEG2, H.264 file. This unit does NOT support DIVX6.x, MSVC/CRAM, MP42, GMC, IV32, RLE, cvid, VC1, RV20 and WMV.
2. Supported audio file: MP3. This unit does NOT support Sony ATRAC3, DTS, Dobby HD.
3. Supported image file format is JPEG. This unit does NOT support Progressive JPEGs.
4. Support storage devices (memory card) in NTFS, FAT32 and FAT16. This unit does NOT support NTFS compressed file.

Video and image files should be a maximum 1920x1080 resolution. (16:9 aspect ratio)

2.3 Steps to Load Media Files

1. Copy the files you want to play on to USB drive in the root directory (without putting them into a folder).
2. Insert USB drive into the USB slot (see Figure 1 and Figure 3).
3. This will automatically delete any files currently stored on the unit's internal memory.
4. The files will then be copied to the internal memory and once completely loaded it will ask you to remove USB drive.
5. Remove the USB drive.
6. The unit will now play the stored files.

2.4 Inputs

CF/SD – Compact Flash and Secure Digital Card Reader

HDMI – High Definition Multimedia Interface Signal Input

VGA – Video Graphics Array Signal Input

YPbPr – Component Signal Input

Video In (AV) – Composite Signal Input

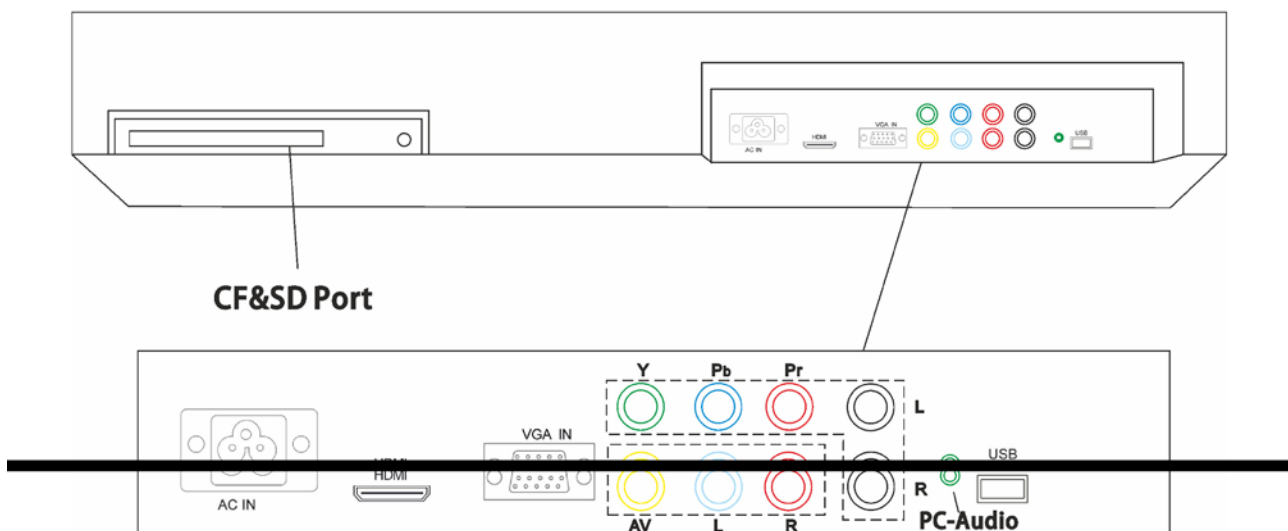


Figure 3 Screen inputs

Note: The YPbPr and VGA connections cannot be used at the same time, and their audio connection cannot be connected at the same time.

3. Installation

3.1 Wall Mounting

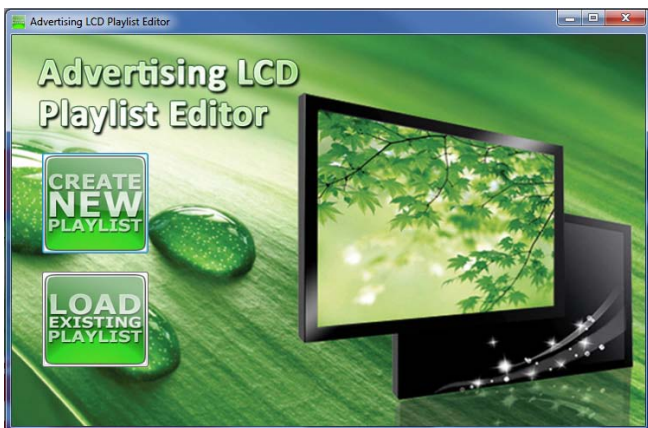
Please refer to instructions enclosed in the wall mount box.

4. Advanced Guide

Although this unit can operate without using any additional software, for more advanced applications please copy the scheduling software or Playlist Editor (on the CD provided) to your computers' hard drive. The software also allows you to edit existing

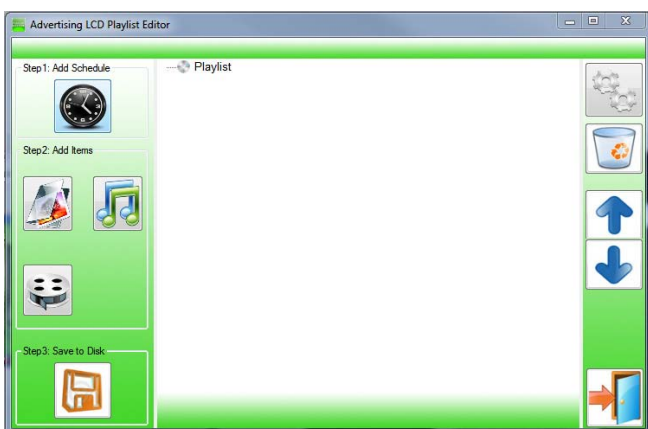
4.1 Main Menu

On opening the application you will be greeted by the main menu screen, giving you the options of "Create New Playlist" and "Load Existing Playlist".



4.2 Creating Playlists

Once you have selected "Create New Playlist" the playlist creator will be launched.



The Playlist Editor is laid out in a user friendly way with the primary functions on the left hand side in easy to follow steps.

4.2.1 Add Schedule

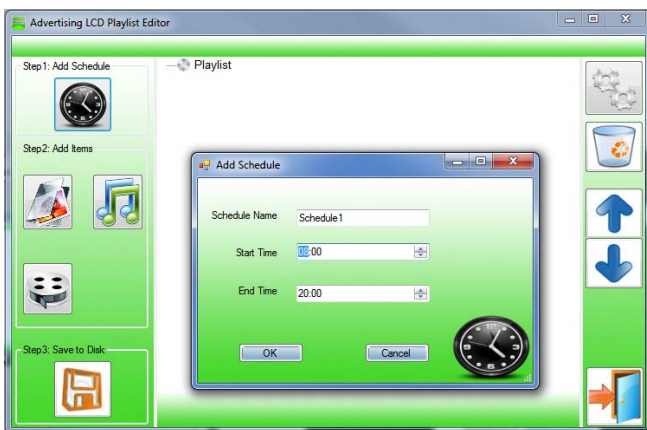
The schedule functions as a timer for the playlists, so you can have between one and eight playlists scheduled to start and end at different times of the day, with up to 50 files in each playlist.

Note: If you enter more than one schedule ensure that the consecutive schedule times do not overlap.

Click on the "Add Schedule" Button

- > Type a Schedule name
- > Select preferred start time
- > Select preferred end time
- > Click "OK"
- > Schedule will appear in the playlist.

To add more schedules simply follow the whole process again for the preferred number of schedules, ensuring you select unique schedule names and times.



4.2.2 Add Selected Items

Note: For compatible file formats please refer to 2.2 Supported Media Files.

Adding Images

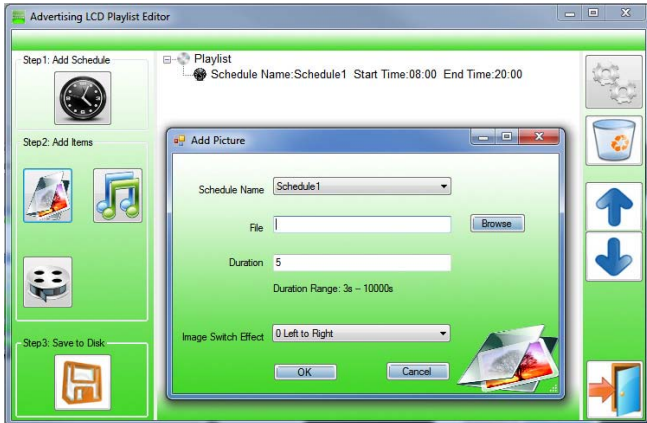
Note: Before adding an image file please ensure that it has a file name of 11 characters or less and that it is NOT a progressive JPEG, as these files will be skipped.

Click "Add Image"

- > Select appropriate Schedule

- > Click "Browse" and locate and select files
- > Enter a duration time
- > Select Image switch mode
- > Click "OK"
- > Image appears in Schedule.

You can select multiple image files at once to add to a schedule, you can also move each item up or down in the playlist by using the arrow buttons on the right hand side.

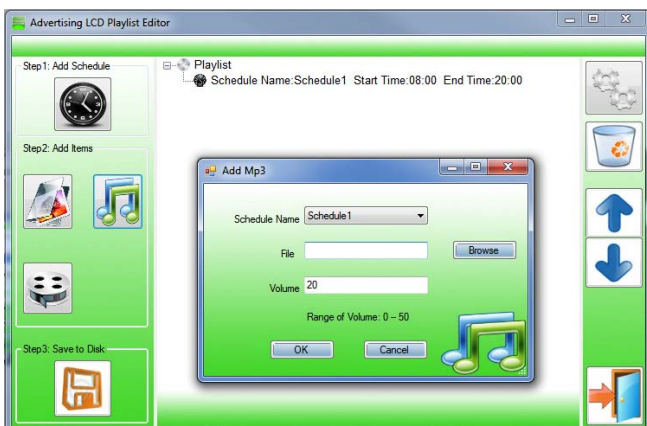


Adding Audio

Note: Before adding an audio file please ensure that it has a file name of 11 characters or less.

- Click "Add MP3"
- > Select Schedule
- > Click "Browse" and select MP3 file
- > Enter volume level
- > Click "OK"
- > MP3 Appears in Schedule.

Note: You must add audio files after all image files.



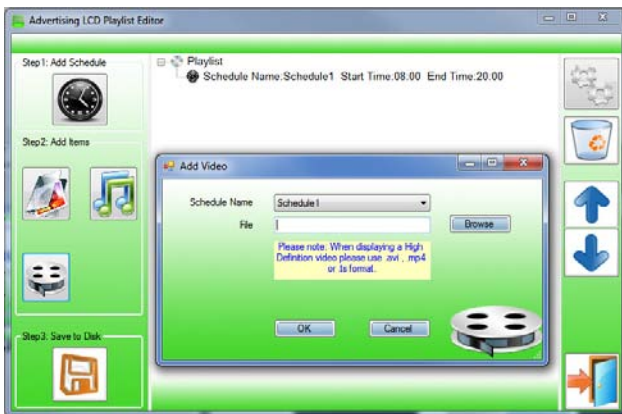
Adding Video

Note: Before adding a video file please ensure that it has a file name of 11 characters or less.

Click "Add Video"

- > Select Schedule
- > Click "Browse" and locate Video file
- > Enter preferred repeat
- > Enter preferred volume
- > Click "OK"
- > Video appears in playlist.

Note: You cannot add Videos and MP3 audio files in the same schedule.

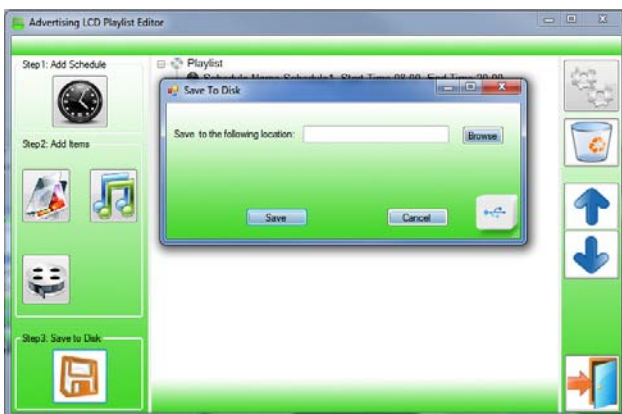


4.2.3 Saving

Note: Before saving please ensure location drive is empty.

Click "Save to Disk"

- > Click "Browse" and select the top level of the USB drive as the location of the playlist and files
- > Click "Save".



4.3 Editing Playlists

From the main menu click "Load Existing Playlist"

> Locate and select playlist to edit

> Playlist appears in playlist creator

> Select item to edit and click "Edit" button located on the top right hand side of the application.

Note: You can also add items to the playlist and add further schedules.

4.3.1 Deleting Items

To delete items within a playlist, select the item and click "Delete" - located on the right hand side of the application. The item will be removed from the playlist.

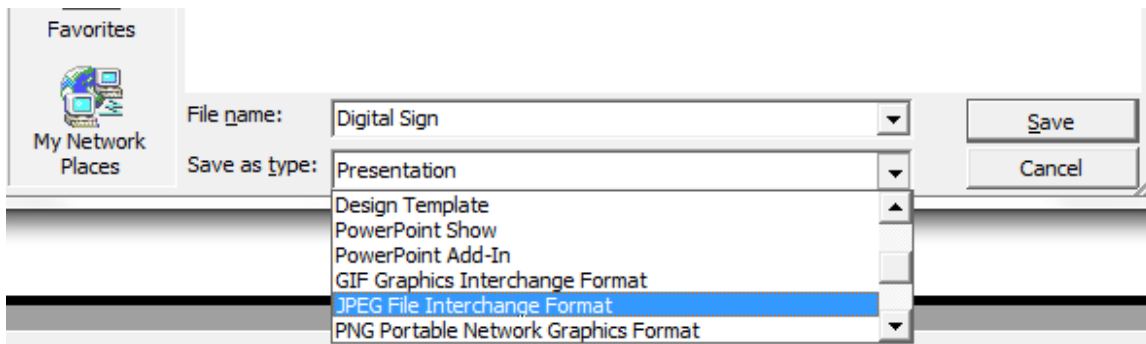
5. F.A.Qs and Troubleshooting Guide

5.1 How do I play PowerPoint presentations on my display?

5.1.1 Option 1 (for plain slides with no animation):

You can save the PowerPoint presentation as a JPEG File Interchange Format (.JPG). Microsoft PowerPoint software allows the user to do this

- 1) Create or open a PowerPoint presentation.
- 2) Click File > Save As
- 3) Enter a File name
- 4) Click on "Save as type" scroll down and find the file extension "JPEG file interchange format", as shown in the image below.



- 5) Click Save.
- 6) A message will appear asking if you would like to save all slides as JPEG's
- 7) Once you have selected your option, The JPEG images will be saved and are ready to use within a playlist or to upload to a storage device.

Note: For the best portrait resolution, you can use this PowerPoint Page Setup: Width 42.6cm; Height 24cm (16:9 Ratio)

5.1.2 Options 2 (for presentations with animation):

You can convert the PowerPoint presentation to a MPEG video clip. For the best display quality you should use the MPEG2 format which gives the best display quality. We suggest that you use the following software:

Software Name: Wondershare PPT2DVD

Web link: <http://www.ppt-to-dvd.com/ppt2dvd/overview.html> :

Select Video Format: PowerPoint to MPEG2 Video Settings:

- TV Standard: NTSC (29.97fps);

- Standard: Standard DVD;
- Aspect Ratio: 16:9 (widescreen);
- Encode Size: Width 720, Height 480.

5.2 Wireless connection

The screen does not have a wireless capability built in. However, with the range of screen inputs available as shown in Figure 3 an external network media player can be easily connected.

5.3 Video Conversion

There are two possible tools for converting video

5.3.1 Format Factory

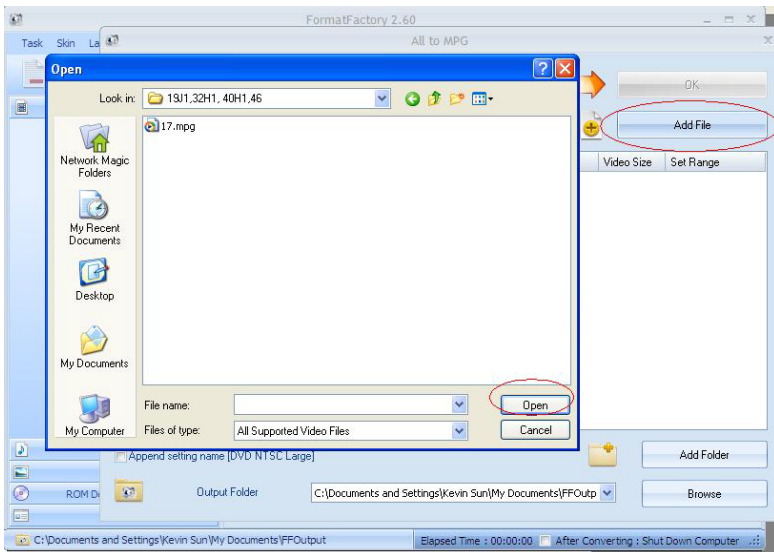
This is a free multipurpose convertor that can be used for normal definition

Normal Definition

1. Download a free convertor (Windows) called Format Factory which can be found at <http://www.formatoz.com/>
2. Start the Software (picture 1).

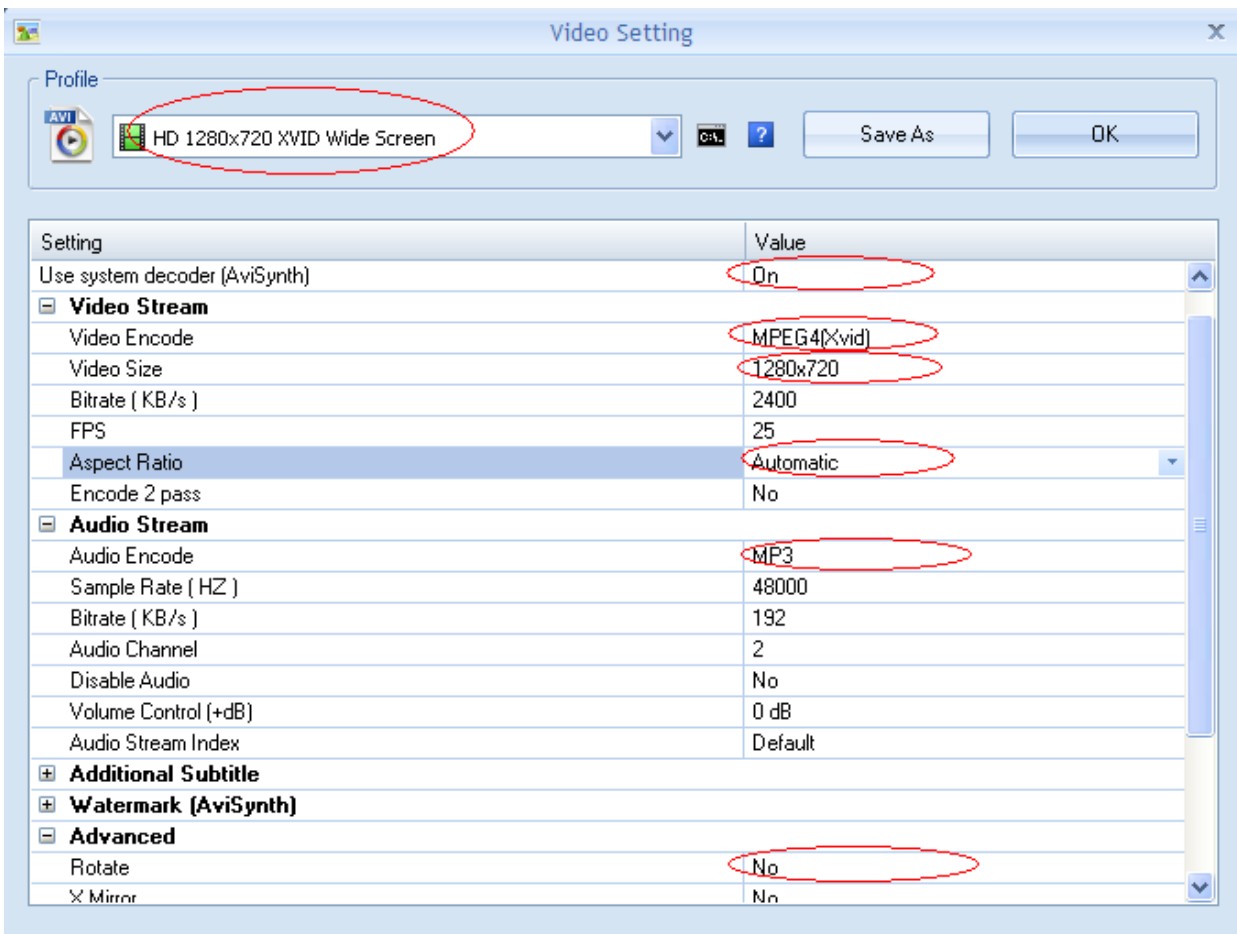


3. On the left hand window pane select the 'Video' conversion options.
4. Select the 'All to AVI' conversion
5. Click the 'Add File' button and locate the file to be converted.



6. Click the 'Output Setting' button and modify it to look like the image shown below. A number of important settings have been highlighted.

7. Select 'OK' to save these changes and then Press 'OK' button to goto main screen



8. Press the 'Start' button along the top to start the conversion. Once completed, press the 'Output Folder' to see the converted video.



5.3.2 HD Video Converter Deluxe

This is only really useful for High Definition videos.

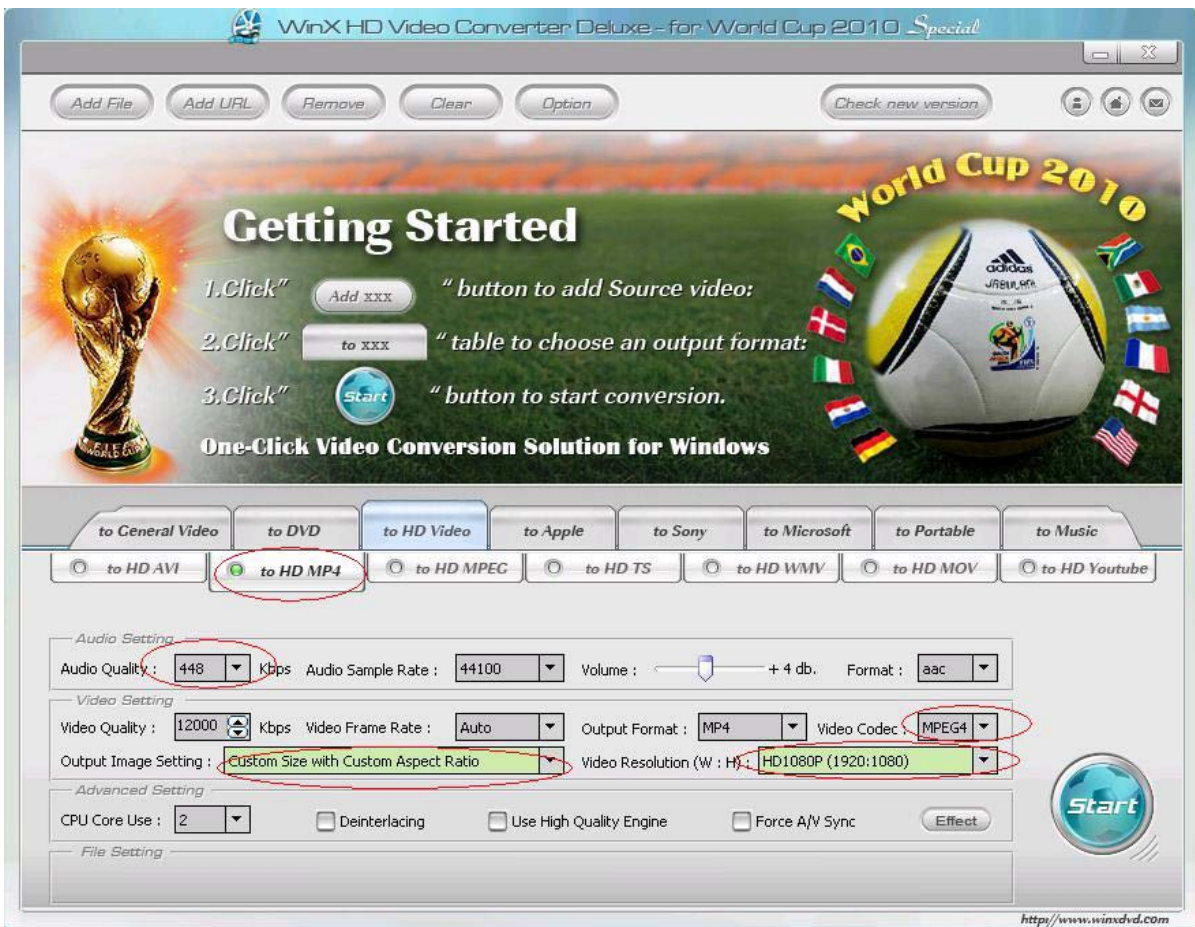
Download link: <http://www.winxdvd.com/hd-video-converter-deluxe/>

This software does require to be bought.

MP4 gives the best display quality. Please follow the following steps:

1. Select "to HD MP4" tab.
2. Change audio quality to 448 kbps, and change video quality to 12000, output image setting to custom size with custom aspect ratio, and video resolution to HD1080P(1920:1080), video codec to MPEG4.

See the screen shot below for the recommend settings.



5.4 Connecting screen to PC

The simplest way is to use the VGA output from the PC or laptop and connect to the VGA input (section 2.4) on the Display panel.

The display panel also has a HDMI and some PCs have HDMI output. In this case connect the PC HDMI to the input HDMI on the Display panel.

5.5 My Remote Control does not appear to be working

The remote controls have been design to have a limited range as some applications require several screens close together and individual control of each. If you are experiencing difficulties in operating your remote please follow these steps before calling your supplier.

- 1) Try pressing "SETUP" with the remote a few inches away from the unit just below the display (see section 1.2). If this does not bring up the menu screen then go on to step 2.
- 2) Replace the batteries in you Remote Control (see section 1.4). If this does not solve the problem then please contact your supplier.

5.6 My media file does not fit properly on the screen

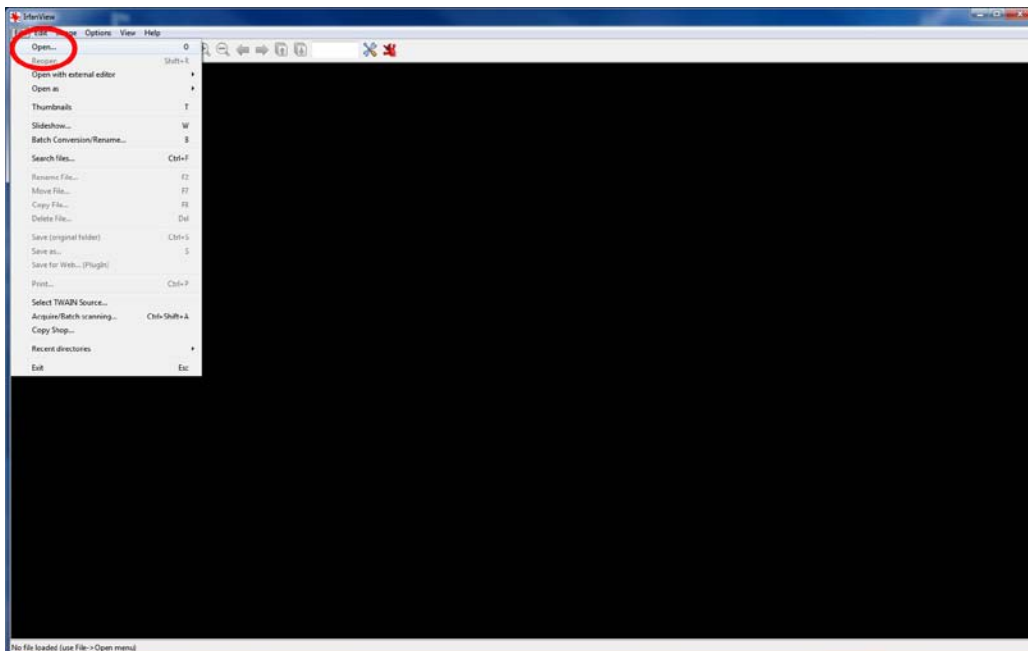
If your media is being displayed with black edges please refer to section 2.2. This has happened because the file is not 16:9 aspect ratio (1920x1080). Please resize file to 1920x1080 pixels and try loading the media onto the display once again.

5.7 My media file will not display or is missing from the playlist

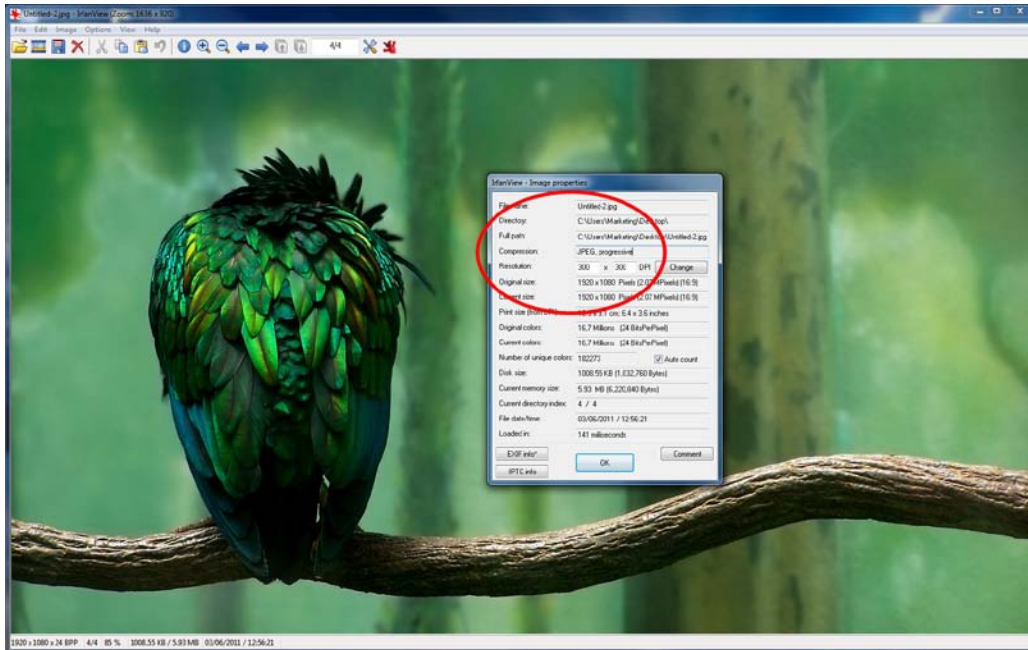
In this situation the first step to take to find the root of the problem is to start with a blank USB drive. Copy 1 file onto the blank USB drive and insert this into the unit, ensuring that the file name is 11 characters or less. If this works and the file displays then re-name all the files that are 12 characters or more to have shorter file names.

If this does not work please check first that the media file is the correct size to fit the screen –1920x1080 pixels. If it is any bigger than this there is a danger of the media file not displaying. For images, check that it is around 1-2 MB in size and that it is a baseline JPEG not a progressive one – as these will be skipped. This can be checked by using free software called IrfanView.

- 1) Download Irfanview
from http://download.cnet.com/IrfanView/3000-2192_4-10021962.html?part=dl-IrfanView&subj=dl&tag=button
- 2) Launch the software then open image file within the program.



- 3) In the toolbar click on "Image" > "Information".
- 4) This brings up the "Image property options".



- 5) Check the compression of the image, if it says “JPEG” the image is a baseline JPEG, however if it says “JPEG, progressive” then you must convert the image using software such as Adobe Photoshop.

5.8 My media files will not update

If you are having problems updating your display follow these steps to ensure it is not a technical issue.

- 1) Ensure that there are no other files or folders stored on the USB drive.
- 2) Check the USB drive for any additional self installation software, if it has this format the drive.
- 3) Make sure the USB drive is firmly inserted into USB slot
- 4) Before contacting your supplier try another USB drive to be certain this is not the fault.

5.9 My media will not loop

If you are having issues with your content not playing over from the start once it has come to an end, then you will have to do a system reset.

- 1) To do this press “SETUP” on your remote control.
- 2) Go to “SYSTEM” and press “PLAY”.
- 3) Go to “Restore Default” and press “PLAY”.
- 4) This will clear the unit’s memory but not the time and date details, try your media again before contacting your supplier.

6. Full Range Specifications

LCD Digital Advertising Display										
	19 Inch	24 Inch	32 Inch	40 Inch	46 Inch	55 Inch	65 Inch	70 Inch	82 Inch	
Resolution	1440x900	1920x1200	1366x768	1920x1080						1800x1010
Display Area (mm)	406.24x253.15	518x324	697.68x392.26	883.16x495.66	1016.35x570.54	1205.6x676.4	1434x806.6	1553.6x875.6	1800x1010	
Aspect Ratio	16:10	16:10	16:9							
Unit Size (WxHxD mm)	486.4x333.4x54.5	602x407x77	800x490x87.2	999.6x592.6x103	1123.6x667.6x89.9	1310.2x780.7x104.5	1564.4x937x129.6	1715x1037x140.6	1866x1080x142.6	
Package Size (WxHxD mm)	605x470x195	750x535x240	970x630x250	1125x800x230	1290x865x265	1619x1015x281	1870x1157x325	2020x1272x350	2175x1315x350	
Vesa Holes (mm)	100x100/ 300x200	200x200/ 400x200	350x330/ 400x200	450x280/ 400x200	600x400/ 450x300/ 400x200	600x400/ 600x280/ 600x120	800x400	800x400	800x400	
Net Weight (kg)	8.5	10.6	21.5	34	40	51	63	70	91	
Gross Weight (kg)	9.5	14.7	23	36	43	56	69	82	108	
Brightness (cd/m ²)	300	500	450	500	450	500	500	600	600	
Colour	16.7M									
Viewing Angle	178°									
Contrast Ratio	700:1	700:1	3000:1	2000:1	2000:1	1500:1	1500:1	2000:1	2000:1	
Power Consumption (W)	36	75	145	195	240	300	300	800	1080	
Input Voltage	AC110-240V(50Hz-60Hz)									
Working Temp	0 °C to 50 °C									
Media Formats	MPEG, MPEG2, MPEG4, H.264, JPEg, MP3, WMA, M4A									
Video Signal Inputs	VGA, AV, HDMI,YPbPr, Video IN									
Audio	2W,8Ω 5W,8Ω									
Memory	2GB SD Card (Supplied)									
Memory Card Type	CF/SD/USB									
Memory Card Capacity	64MB-12GB									
Accessories	Remote control, AC Power Cable, Scheduling Software CD, Key, Wall Mount, User Manual									
Optional Extras	Touch Screen, RSS Feeds, Networking									