



## Amusement Button



### 1 SoundClip/VideoClip Configuration

Used alongside our media players, allows visitors to activate content via buttons.

### 2 Colour Options

Available in White, Green and Red.

### 3 High or Low Profile

Supplied with a removable high profile fixing, allowing for a low profile flush fit.

### 4 Lock Nut

Lock your Button into place with the provided nut.

## Options

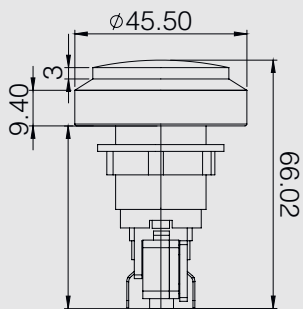
### ✓ Bulb Type

As standard the button is supplied with an incandescent bulb. Upgrade to an LED for an additional cost.

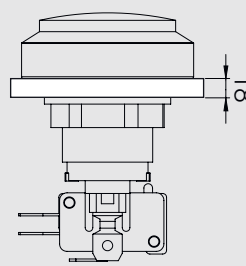
# Technical Information

<b>Weight</b>	0.01Kg
<b>Dimensions (Button)</b>	45.50D x 45.50W x 66.02H mm
<b>Cable Length</b>	2M, 5M
<b>Bulb Power Consumption</b>	Incandescent: 12V, 2.4W LED: 12V, 0.24W
<b>Terminal</b>	Wire
<b>Max. Switch Rating</b>	16A 250VAC
<b>Contact Resistance</b>	100mΩ Max
<b>Insulation Resistance</b>	500VDC, 100MΩ Min
<b>Dielectric Strength</b>	500VAC, 1 Minute
<b>Operation Temperature</b>	-25°C ~ +85°C
<b>Mechanical Life</b>	1,000,000 Cycles
<b>Electrical Life</b>	50,000 Cycles
<b>Included</b>	1 x Amusement Button

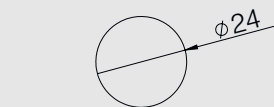
High Profile



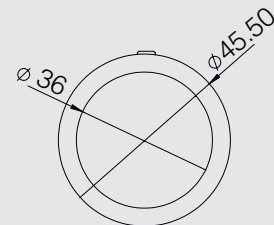
Max. Panel Thickness



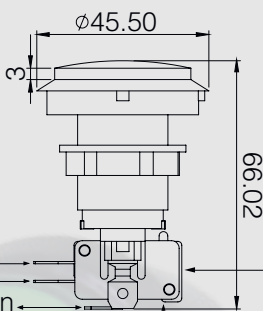
Suggested Panel Cutout



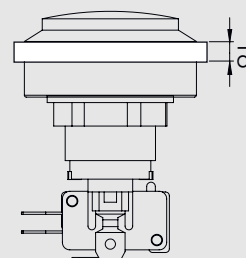
Aerial View - Button



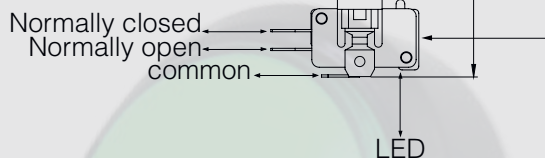
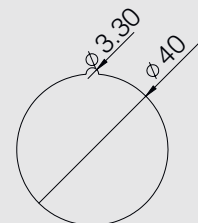
Low Profile



Max. Panel Thickness



Suggested Panel Cutout



Blue\* Connector + Black Wire With White Stripe = Positive LED  
Blue\* Connector + Black Wire With No Stripe = Negative LED

Red Connector With Stripe = Normally Closed / Open  
Red Connector With No Stripe = Common



## Changing the Bulb

Separating the Button and Bulb - Twist right  
Fitting together - Line the insert with the button, and twist left

\*Spade connector colours may vary

## Related Products



Push Button



VideoClip-HD8



Heavy Duty Handset



SoundClip-2