



7" Open Frame Video Screen

Manual

Contents

Safety Guide	3
Your new 7" Video Screen	4
Setting Up	5
Overview.....	5
Formatting	6
Remote Control	7
Programming	8
Technical Information.....	9
Technical Drawings.....	10

Safety Guide

Please observe the following when installing this device.

Warning

- This product is not designed to be resistant to moisture or excessive dirt/dust. When deciding on a suitable installation point ensure there is reasonable protection from environmental damage.
- If there is damage to the power supply in any way, arrange for a replacement unit by contacting blackbox-av. They may require you to send the defective power unit back so in this case do not dispose of the power supply unless prompted to do so. If you wish to source your own power supply a CE or FC certified double insulated and regulated supply is required. The Power supply has an output rating of 12vDC at 2A, 24W. Using a power supply with a higher voltage will irreparably damage the display unit.
- Do not place the unit in direct sunlight for prolonged periods as this may cause the product to overheat.
- For disposal of old electrical equipment please follow the guidelines associated with your country/territory or ship the unit back to blackbox-av and we will dispose/recycle the unit. The symbol on the left indicates that this product shall not be treated as household waste.



Instead it shall be handed to applicable collection points for the recycling of electronic equipment. If you dispose of this unit correctly you will be helping prevent future harm to the environment which is caused by poor waste management of this type of equipment. If the screen has been damaged take extra care to prevent the LCD liquid from leaking out of the unit and wrap in a strong plastic bag with no holes.

Precautions of Use

- Whilst the unit is connected to a mains outlet and the power is switched on it is providing energy for operating the device. If the unit is not being used for long periods of time it is recommended to turn off the power as it will prolong the life of its electronic circuitry.

Your new 7" Video Screen

In the Box

1. 7" Video Screen and Player
2. 12V Power Supply
3. Button Cables
4. Remote Control
5. USB or SD Card
6. Speakers

7" Video Screen

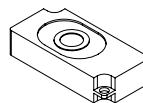
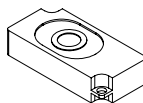
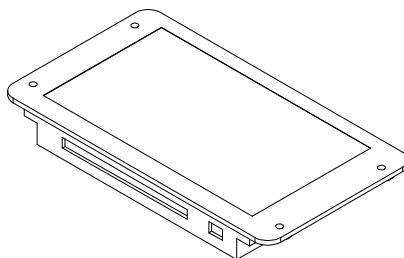
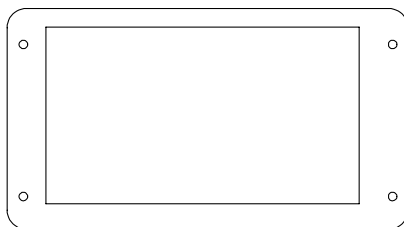
The 7" Open Frame Video Screen is an all in one media player and screen. It's used to display video, images and audio in a small compact manner. The open frame design allows it to be easily mounted with signage or other such installations.

Play Modes

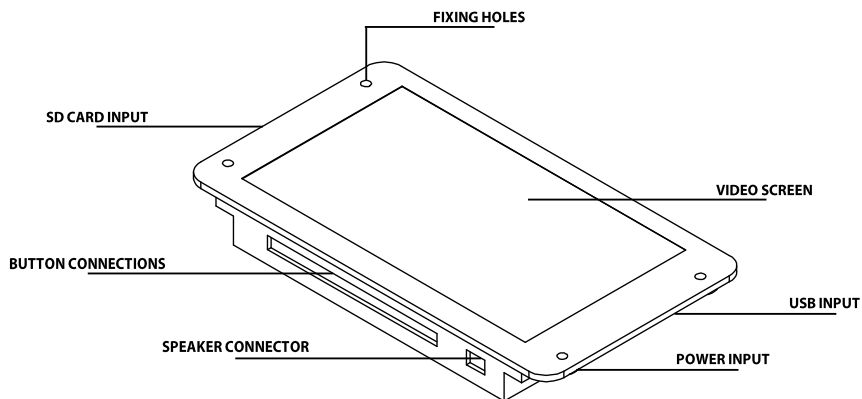
It can be looping or use up to 8 activation buttons.

Mountable Speakers

The 7VS is supplied with 2 Mountable Speakers.



Setting Up



Overview

Power Input

Powered by a 12V Power Supply, the 7VS can be turned on/off via mains.

USB/SD Card

The 7VS provides both USB and SD Card slots for playing content (supplied as standard with an SD Card). Go to 'Programming' for information on how to program your USB or SD Card.

Button Connections

If you wish to use button activated content then attach the required number of buttons using the button wires (supplied) to the appropriate button inputs.

Screen Protector

The 7VS is supplied with a clear screen protector. This ensures that the screen doesn't get damaged whilst in use.

Optional Audio Out

The 7VS can support one 3.5mm audio out port (upon request), supporting both headphones and amplifiers.

Fixing Holes

The 7VS is built with 4 fixing holes for easy mounting (two on either side).

Formatting

Converting your Content

Before putting the content onto either a USB or SD Card it needs to be in the right format as listed below. Your storage medium must be formatted to FAT32.

Below are the file type requirements.

Video	Category	Codec/FourCC	Max Res	Max Bitrate
	MP4	MPEG4	800x480	10M
Photo	Sub Type	Codec	Max Res	Size
	JPG	YUV400 YUV420 YUV422 YUV440 YUV444	8000x8000	No Limit
Audio	Category	Codec	Sample Rate	Bitrate
	MP3	MP3	8-320Khz	32Kbps- 448kbps

Image Playback

For optimal image playback we recommend images be 1024 x 600 pixels at 300DPI and saved as a JPEG.

Video Playback

For optimal video playback it is recommended that your video is 1024 x 600 in .MP4 format.

Audio Playback

For optimal audio playback it is recommended that your audio file is formatted to MP3 and has a bitrate of 44.1Khz.

Remote Control

Functions

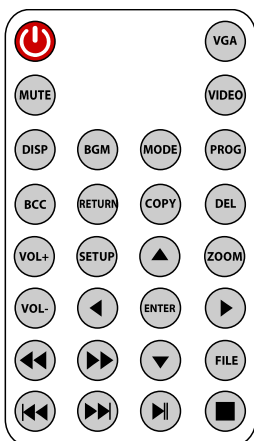
The Remote Control enables you to set a range of functions.

To access the menu press the 'setup' button, press this again to exit.

If the TVS is playing content you may need to press the 'stop' button before entering the setup menu, otherwise a number of options might be greyed out and unable to be accessed.

The remote sensor is located at the bottom rear of the screen.

Controls



POWER	Power On/Off
MUTE	Volume On/Off
DISP	Display current time on the top right corner of the screen
MODE	Adjust the Play Mode
BCC	Adjust the Brightness, Colour, Clarity and Contrast
RETURN	Return to the file list
COPY	File copy, insert USB and SD card, double click the "COPY" button
DEL	Delete file
VOL+	Increase Volume
SETUP	Press once to enter File list, press twice to enter SETUP Menu
▲ ◀ ▶ ▼	Navigation buttons (up, left, right, down)
VOL-	Decrease Volume
ENTER	ENTER, confirm button
◀▶	Play-back / Play-forward (2x, 4x, 6x, 8x, 16x, 32x)
◀▶	Previous / Next file
⏸	Pause
■	Stop

Programming

Once you have edited and converted your content into the correct format you will need to put these on USB or SD Card.

The file names of your content will determine how it is activated.

The USB or SD Card will be pre-programmed with a template, when loading your content make sure to delete these files. It's recommended that you store the template files on your computer for future reference.

Should you need to use a different USB / SD Card we suggest you format it to 'FAT32'.

To program your content you will need;

1. A PC or laptop with Windows OS
2. Correctly formatted content
3. USB Stick or SD Card (Supplied)

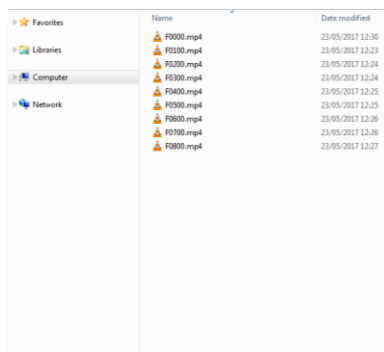
1. Windows OS

Windows OS is required to program your AV Point using a PC or laptop (xp – 10).

MacOS is not supported due to hidden files generated by the OS.

2. Your Content

Place all your formatted files into the root of the USB or SD Card whilst renaming them like so. Each file is associated with a button. The 'F' at the beginning needs to be a capital as the player is case sensitive.



F0000 – Looping (Content begins automatically on startup)

F0100 – Button 1

F0200 – Button 2

F0300 – Button 3

F0400 – Button 4

...

F1000 – Button 10

Within the above configuration the player will play: video F0000 as the loop. If button 1 is pressed it will play F0100. Once F0100 is complete, F0000 will resume unless a button is pressed.

Note: The loop is designed to be used for creating the button selection screen. This can be an image or video but must be named F0000.

Technical Information

Weight	0.8Kg
Dimensions	254 x 222 x 100 mm
Screen Size	197 x 109 x 27.20
Fixing Options	Fixing Wings, 45 x 75mm VESA
Audio Encoding	Sample Rate: 8-320KHz, Bitrate: 32-448Kbps
Storage Medium	SDHC or USB
Button Inputs	8
Playable Format	Video: .MP4, Audio: .MP3, Images: .JPG
Resolution	Still Picture: up to 8000 x 8000px, Video: 1024 x 600
Viewing Angle	U45°/D50°/L45°/R50°
Contrast Ratio	500:1
Luminance	300-350cd/m ²
Integrated Speakers	2W x 2
Output Type	With Speakers

Technical Drawings

